



BALDOR® • RELIANCE

Product Information Packet

KECO, INC

36R149N154G1

5//4HP,1725//1425RPM,1PH,60//50HZ,184TC

Part Detail							
Revision:	B	Status:	PRD/A	Change #:		Proprietary:	Yes
Type:	AC	Elec. Spec:	36WGN154	CD Diagram:	CD0002A02	Mfg Plant:	
Mech. Spec:	36R149	Layout:	36LYR149	Poles:	04	Created Date:	07-10-2017
Base:	RG	Eff. Date:	11-20-2017	Leads:	1#12 A PH,1#10 #4TH,3#16 B&J		

Specs			
Enclosure:	TEFC	Inverter Code:	Not Inverter
Frame:	184TC	Lifting Lugs:	No Lifting Lugs
Frame Material:	Steel	Locked Bearing Indicator:	Locked Bearing
Output @ Frequency:	5.000 HP @ 60 HZ	Motor Lead Quantity/Wire Size:	2 @ 12 AWG, A PH
	3.000 HP @ 50 HZ	Motor Lead Exit:	Ko Box
Synchronous Speed @ Frequency:	1500 RPM @ 50 HZ	Motor Lead Termination:	Flying Leads
Voltage @ Frequency:	208.0 V @ 60 HZ	Motor Type:	3646LC
	220.0 V @ 50 HZ	Mounting Arrangement:	F1
	240.0 V @ 60 HZ	Product Family:	General Purpose
XP Class and Group:	None	Pulley End Bearing Type:	Ball
XP Division:	Not Applicable	Pulley Face Code:	C-Face
Auxillary Box:	No Auxillary Box	Pulley Shaft Indicator:	Standard
Auxillary Box Lead Termination:	None	Rodent Screen:	None
Base Indicator:	Rigid	Shaft Extension Location:	Pulley End
Bearing Grease Type:	Polyrex EM (-20F +300F)	Shaft Ground Indicator:	No Shaft Grounding
Blower:	None	Shaft Rotation:	Reversible
Design Code:	L	Shaft Slinger Indicator:	No Slinger
Drip Cover:	No Drip Cover	Speed Code:	Single Speed

Duty Rating:	CONT	Motor Standards:	NEMA
Electrically Isolated Bearing:	Not Electrically Isolated	Starting Method:	Direct on line
Feedback Device:	NO FEEDBACK	Thermal Device - Bearing:	None
Front Face Code:	Standard	Thermal Device - Winding:	None
Front Shaft Indicator:	None	Vibration Sensor Indicator:	No Vibration Sensor
Heater Indicator:	No Heater	Winding Thermal 1:	Automatic Thermal Overload
Insulation Class:	F	Winding Thermal 1 Location:	KO
		Winding Thermal 2:	None

Nameplate NP3694L										
CAT.NO.	DM-0500.1PH.01.A									
SPEC.	36R149N154G1									
HP	5//4									
VOLTS	208-240//220									
AMPS	22-18.7//18.2									
R.P.M.	1725//1425									
FRAME	184TC				HZ	60//50			PH	1
SER.F.	1.00		CODE	G	DES.	L		CLASS	F	
NEMA NOM. EFF.	84			P.F.	99					
RATING	40C AMB-60 MIN									
CC									USABLE AT 208V	
DE	6206				ODE	6205				
ENCL	TEFC		SN							
	-									

Parts List		
Part Number	Description	Quantity
SA341373	SA 36R149N154G1	1.000 EA
RA329751	RA 36R149N154G1	1.000 EA
OC3060F10SP	CYL OIL CAP 60MFD/370V	1.000 EA
TPBRJ27DY	THERMAL 1PH 1.25 AUT 120C X	1.000 EA
EC1216D06	ELEC CAP, 216-259MFD, 330V, 2.06D X 4.38	2.000 EA
36CB3004A42	36 CB 1.09 @ 6, 1.25 ATO @ 3	1.000 EA
36GS1000SP	GASKET-CONDUIT BOX, .06 THICK #SV-330 LE	1.000 EA
51XB1016A08	10-16X 1/2HXWSSLD SERTYB	2.000 EA
11XW1032G06	10-32 X .38, TAPTITE II, HEX WSHR SLTD U	1.000 EA
HA6015A09	THERMAL RETAINER PLATED	1.000 EA
51XB1214A10	12-14 X 5/8HX WS SL SR TYBX	2.000 EA
36EP3104A01	FREP MACH W/GRSR, RAISED FH PADS	1.000 EA
HW4500A01	1641B(ALEMITE)400 UNIV, GREASE FITT	1.000 EA
13XF0832A08	8-32 X.50 PAN HD,SLTD, TYPE F SCREW, ZIN	2.000 EA
36CB3800SP	CAPACITOR COVER, CAST	1.000 EA
HA7010A01	CAPACITOR RETENTION CLAMP, 6.562 LONG	1.000 EA
36GS3000	GASKET, CAPACITOR COVER LEXIDE	1.000 EA
10XN2520A12	O1/4-20X 3/4 HEX HEAD CAP	2.000 EA
HW5100A05	WVY WSHR F/205 & 304 BRGS	1.000 EA
36EP3301A01SP	PU ENDPLATE, ENCL. 182-4TC 206 BRG. W/GR	1.000 EA
HW4500A01	1641B(ALEMITE)400 UNIV, GREASE FITT	1.000 EA
10XN2520A26	1/4-20X 1 5/8 HEX HD	4.000 EA
HW1001A25	LOCKWASHER 1/4, ZINC PLT .493 OD, .255 I	4.000 EA
51XB1214A16	12-14X1.00 HXWSSLD SERTYB	1.000 EA

Parts List (continued)		
Part Number	Description	Quantity
36FH4009A102	IEC FH GREASER PRIMED	1.000 EA
51XW1032A06	10-32 X .38, TAPTITE II, HEX WSHR SLTD S	3.000 EA
36CB4516	36 LIPPED CB LID - GALVANNEAL	1.000 EA
37GS1001SP	GASKET, CONDUIT BOX LID, .06 THICK LEXID	1.000 EA
51XW0832A07	8-32 X .44, TAPTITE II, HEX WSHR SLTD SE	4.000 EA
HW2501E16	KEY, 1/4 SQ X 1.750	1.000 EA
HA7000A02	KEY RETAINER RING, 1 1/8 DIA, 1 3/8 DIA	1.000 EA
85XU0407S04	4X1/4 U DRIVE PIN STAINLESS	2.000 EA
LB1118	LABEL,WARNING (ROLL LABEL)	1.000 EA
MJ1000A02	GREASE, POLYREX EM EXXON (USe 4824-15A)	0.050 LB
MG1000Y03	MUNSELL 2.53Y 6.70/ 4.60, GLOSS 20,	0.022 GA
MG1025A01	WILKOFASST SG, 770.02, CLEAR SEMI-GLOSS	0.022 GA
WD1000A15	3-520132-2 AMP FLAG (4M/RL NON-CANC/NON-	6.000 EA
HA3101A28	THRUBOLT 1/4-20 X 12.500 OHIO ROD	4.000 EA
35FN3002A04SP	EXFN, PLASTIC, 6.376 OD, .906 ID W/KEY	1.000 EA
SP5172A05	37 TYPE LC TORQ STAT SW LEAD ASSEMBLY	1.000 EA
LC0002	CONNECTION LABEL	1.000 EA
G0PA1000	PKG GRP, PRINT PK1026A06	1.000 EA
MN416A01	TAG-INSTAL-MAINT no wire (1100/bx) 11/14	1.000 EA
LB1417	LABEL CARTON 6X4 PERFORATED BLANK ROLLS	1.000 EA
FE-0000001	ZRTG FE ASSEMBLY	1.000 EA
NP3694L	SS SUPER-E UL CSA CC THERMAL REV MTG KEC	1.000 EA
PE-0000001	ZRTG PE ASSEMBLY	1.000 EA

AC Induction Motor Performance Data

Record # 68002 - Typical performance - not guaranteed values

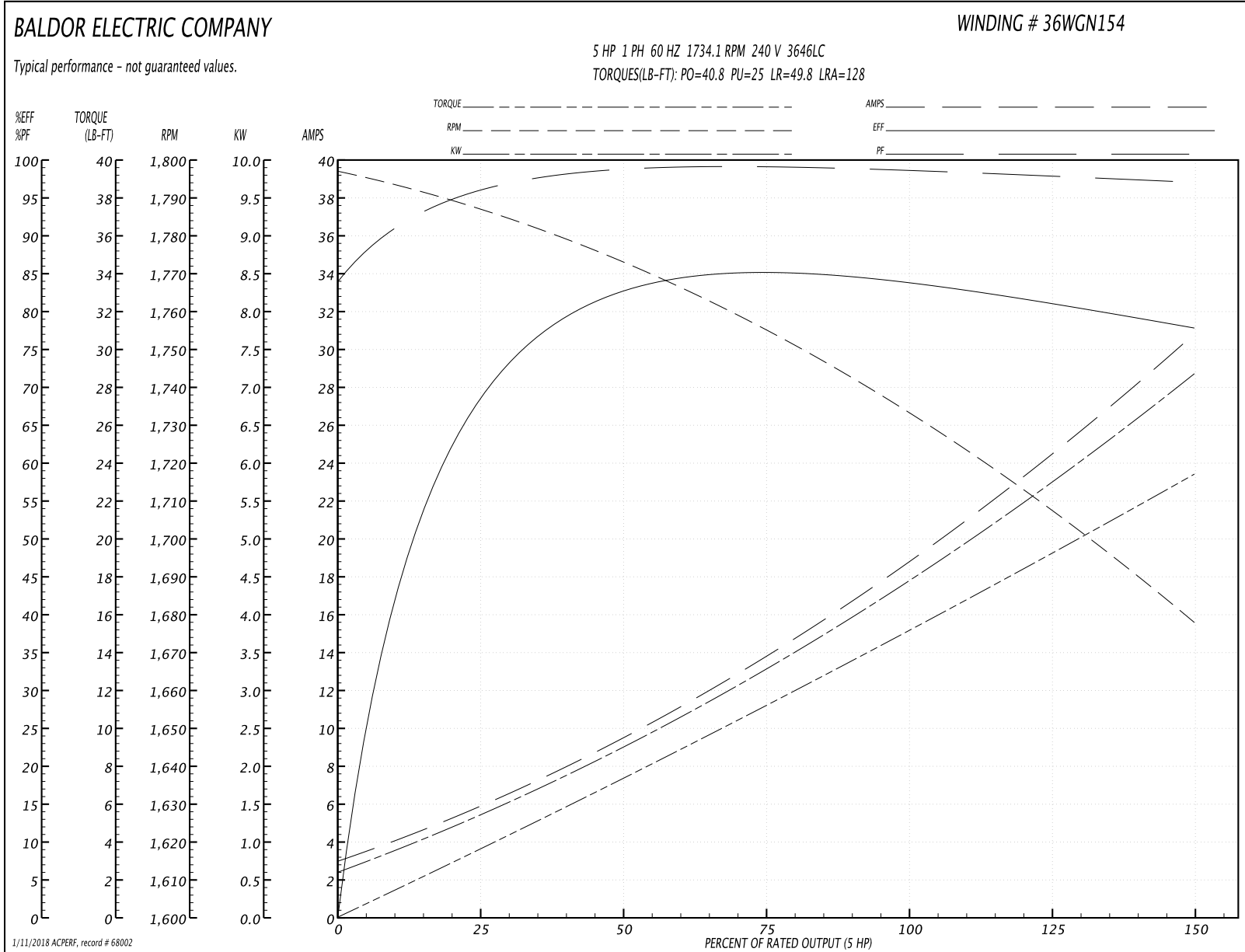
Winding: 36WGN154-R002	Type: 3646LC	Enclosure: TEFC
-------------------------------	---------------------	------------------------

Nameplate Data				240 V, 60 Hz: Single Voltage Motor	
Rated Output (HP)	5//4			Full Load Torque	15.12 LB-FT
Volts	208-240//220			Start Configuration	direct on line
Full Load Amps	22-18.7//18.2			Breakdown Torque	40.8 LB-FT
R.P.M.	1725//1425			Pull-up Torque	25 LB-FT
Hz	60//50	Phase	1	Locked-rotor Torque	49.8 LB-FT
NEMA Design Code	L	KVA Code	G	Starting Current	128 A
Service Factor (S.F.)	1			No-load Current	2.81 A
NEMA Nom. Eff.	84	Power Factor	99	Line-line Res. @ 25°C	0.44874 Ω A Ph 1.043 Ω B Ph
Rating - Duty	40C AMB-60 MIN			Temp. Rise @ Rated Load	

Load Characteristics 240 V, 60 Hz, 5 HP

% of Rated Load	25	50	75	100	125	150
Power Factor	97	99	99	99	98	97
Efficiency	66.7	81	84.9	84.6	81.9	77.3
Speed	1786	1772.1	1755.5	1734.1	1708.5	1677.1
Line amperes	6.03	9.72	13.9	18.6	24.1	31.1

Performance Graph at 240V, 60Hz, 5.0HP Typical performance - Not guaranteed values



AC Induction Motor Performance Data

Record # 68003 - Typical performance - not guaranteed values

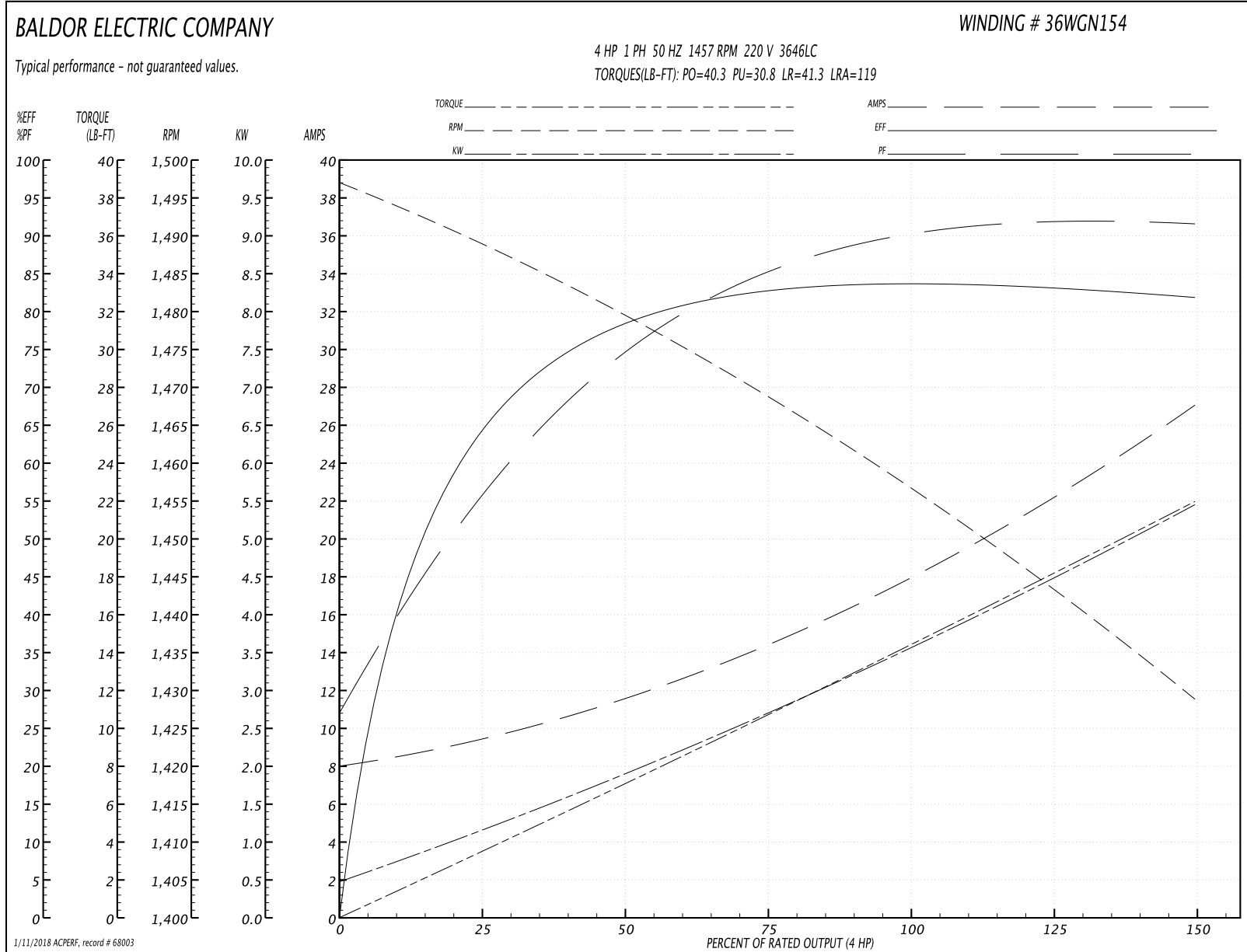
Winding: 36WGN154-R002	Type: 3646LC	Enclosure: TEFC
-------------------------------	---------------------	------------------------

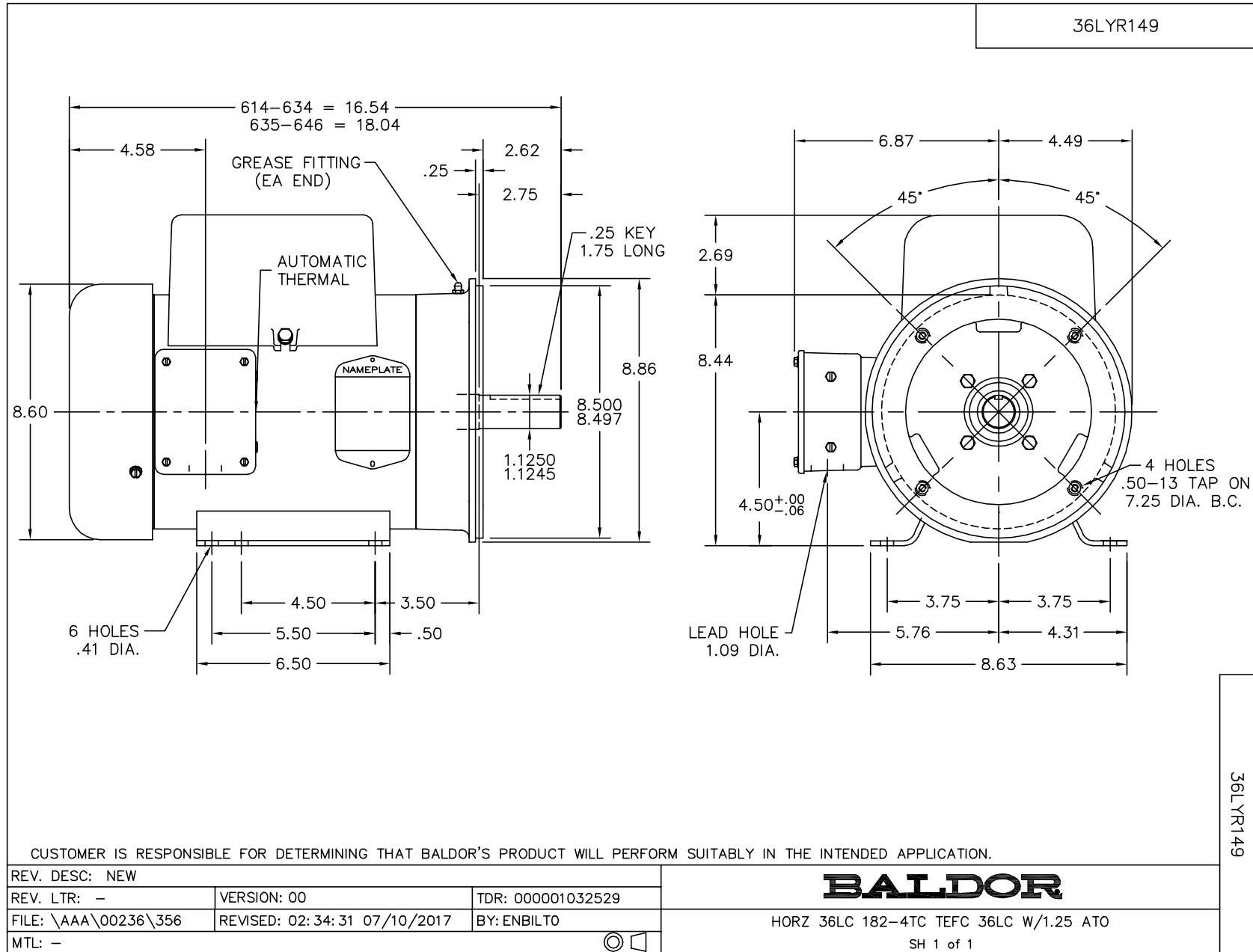
Nameplate Data				220 V, 50 Hz: Single Voltage Motor	
Rated Output (HP)	5//4			Full Load Torque	14.39 LB-FT
Volts	208-240//220			Start Configuration	direct on line
Full Load Amps	22-18.7//18.2			Breakdown Torque	40.3 LB-FT
R.P.M.	1725//1425			Pull-up Torque	30.8 LB-FT
Hz	60//50	Phase	1	Locked-rotor Torque	41.3 LB-FT
NEMA Design Code	L	KVA Code	G	Starting Current	119 A
Service Factor (S.F.)	1			No-load Current	8.24 A
NEMA Nom. Eff.	84	Power Factor	99	Line-line Res. @ 25°C	0.423 Ω A Ph 1.05 Ω B Ph
Rating - Duty	40C AMB-60 MIN			Temp. Rise @ Rated Load	
				Locked-rotor Power Factor	84.7
				Rotor inertia	0.431 LB-FT ²

Load Characteristics 220 V, 50 Hz, 4 HP

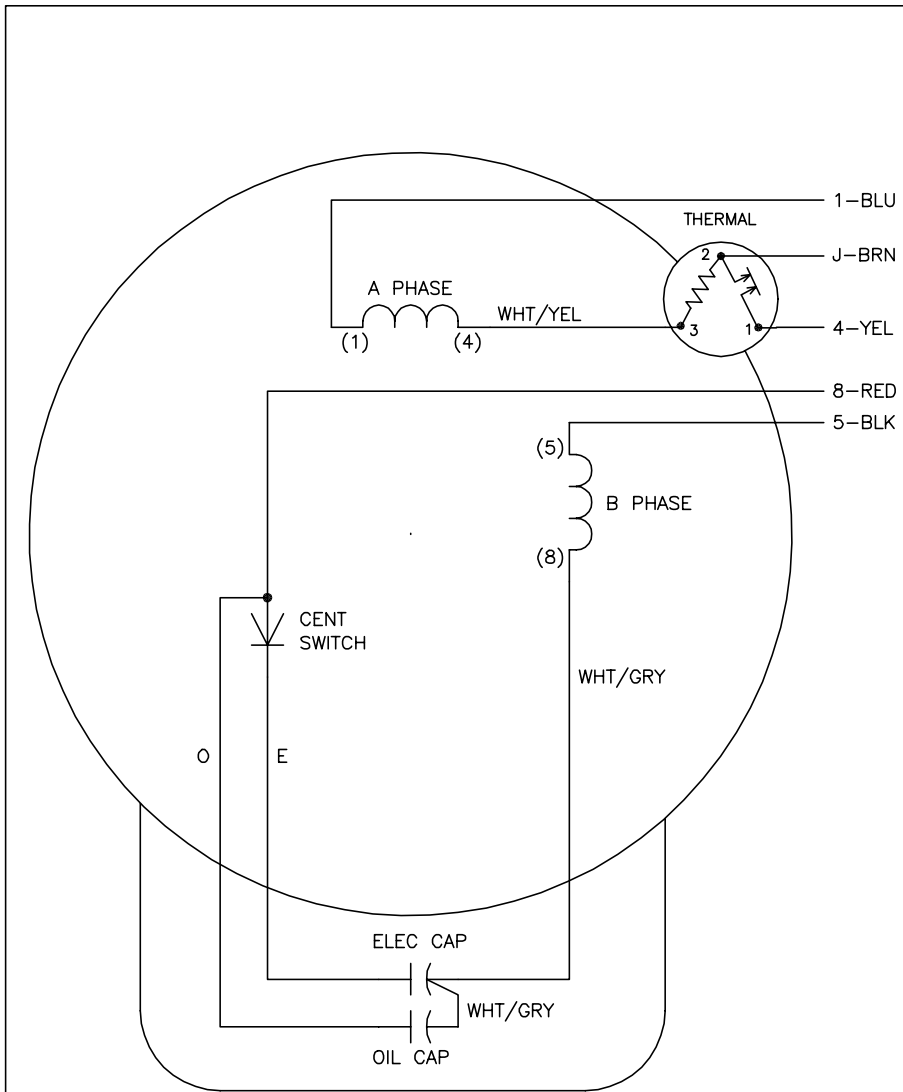
% of Rated Load	25	50	75	100	125	150
Power Factor	58	77	85	89	91	92
Efficiency	63.6	78.3	82.6	84	83.2	81.7
Speed	1489	1479	1469	1457	1443	1429
Line amperes	9.2	11.37	14.54	18.13	22.3	26.89

Performance Graph at 220V, 50Hz, 4.0HP Typical performance - Not guaranteed values





CD0002A02



	LINE A	LINE B	JOIN
STD	1,8	4	J,5
OPP	1,5	4	J,8

NOTES:

1. STANDARD ROTATION IS CCW FACING END OPPOSITE SHAFT EXTENSION.
2. MULTIPLE CAPACITORS ARE CONNECTED IN PARALLEL UNLESS OTHERWISE SPECIFIED.
3. LEAD COLORS ARE OPTIONAL. LEADS MUST ALWAYS BE NUMBERED AS SHOWN.

CD0002A02

REV. DESC: REMOVE 2-TERMINAL THERMAL DETAIL, SEE CD0002A04			
REV. LTR: D	VERSION: 01	TDR: 000000360649	
Z0VZ000003 CD0002A02	FILE: \AAA\00007\520	REVISED: 17:11:40 04/15/2005	
	MTL: -	BY: ENJOEPO	

BALDOR ELECTRIC Co.

TYPE LC, SV, REV, THERMAL, 5 LEADS