

BALDOR® • RELIANCE

Product Information Packet

KECO, INC

35A012L172G1

1.5HP,1750//1450RPM,3PH,60//50HZ,56C,352

Part Detail							
Revision:	A	Status:	PRD/A	Change #:		Proprietary:	Yes
Type:	AC	Elec. Spec:	35WGL172	CD Diagram:	CD0007	Mfg Plant:	
Mech. Spec:	35A012	Layout:	35LYA012	Poles:	04	Created Date:	07-10-2017
Base:	RG	Eff. Date:	08-10-2017	Leads:	12#18		

Specs			
Enclosure:	TEFC	Front Shaft Indicator:	None
Frame:	56C	Heater Indicator:	No Heater
Frame Material:	Steel	Insulation Class:	F
Output @ Frequency:	1.500 HP @ 50 HZ	Inverter Code:	Inverter Ready
	1.500 HP @ 60 HZ	KVA Code:	M
Synchronous Speed @ Frequency:	1800 RPM @ 60 HZ	Lifting Lugs:	No Lifting Lugs
Voltage @ Frequency:	380.0 V @ 50 HZ	Locked Bearing Indicator:	Locked Bearing
	230.0 V @ 60 HZ	Motor Lead Quantity/Wire Size:	12 @ 18 AWG
	208.0 V @ 60 HZ	Motor Lead Exit:	Ko Box
	190.0 V @ 50 HZ	Motor Lead Termination:	Flying Leads
	460.0 V @ 60 HZ	Motor Type:	3526M
XP Class and Group:	None	Mounting Arrangement:	F1
XP Division:	Not Applicable	Power Factor:	73
Agency Approvals:	UR	Product Family:	General Purpose
	CSA	Pulley End Bearing Type:	Ball
Auxillary Box:	No Auxillary Box	Pulley Face Code:	C-Face
Auxillary Box Lead Termination:	None	Pulley Shaft Indicator:	Standard
Base Indicator:	Rigid	Rodent Screen:	None

Bearing Grease Type:	Polyrex EM (-20F +300F)	RoHS Status:	ROHS COMPLIANT
Blower:	None	Shaft Extension Location:	Pulley End
Current @ Voltage:	5.000 A @ 190.0 V	Shaft Ground Indicator:	No Shaft Grounding
	4.600 A @ 208.0 V	Shaft Rotation:	Reversible
	4.400 A @ 230.0 V	Shaft Slinger Indicator:	No Slinger
	2.500 A @ 380.0 V	Speed Code:	Single Speed
	2.200 A @ 460.0 V	Motor Standards:	NEMA
Design Code:	B	Starting Method:	Direct on line
Drip Cover:	No Drip Cover	Thermal Device - Bearing:	None
Duty Rating:	CONT	Thermal Device - Winding:	None
Electrically Isolated Bearing:	Not Electrically Isolated	Vibration Sensor Indicator:	No Vibration Sensor
Feedback Device:	NO FEEDBACK	Winding Thermal 1:	Automatic Thermal Overload
Front Face Code:	Standard	Winding Thermal 1 Location:	SB
		Winding Thermal 2:	None

Nameplate NP3690L										
CAT.NO.	DM-0150.3PH.01.A									
SPEC.	35A012L172G1									
HP	1.5									
VOLTS	208-230/460//190/380									
AMPS	4.6-4.4/2.2//5/2.5									
R.P.M.	1750//1450									
FRAME	56C					HZ	60//50		PH	3
SER.F.	1.15					CODE	M		DES.	B
NEMA NOM. EFF.	86.5					P.F.	73		CLASS	F
RATING	40C AMB-CONT									
CC	010A							USABLE AT 208V	4.6	
DE	6205					ODE	6203			
ENCL	TEFC					SN				
	IP44									

Parts List		
Part Number	Description	Quantity
SA341284	SA 35A012L172G1	1.000 EA
RA329657	RA 35A012L172G1	1.000 EA
NS2512A01	INSULATOR, CONDUIT BOX X	1.000 EA
35CB3007	35 CB CASTING W/.88 DIA. LEAD HOLE	1.000 EA
36GS1000SP	GASKET-CONDUIT BOX, .06 THICK #SV-330 LE	1.000 EA
51XB1016A07	10-16 X 7/16 HXWSSLD SERTYB	2.000 EA
11XW1032G06	10-32 X .38, TAPTITE II, HEX WSHR SLTD U	1.000 EA
35EP3100M02	FREP TEFC 203 BRG W/O GRSR (RAISED FH MT	1.000 EA
HW5100A03	WAVY WASHER (W1543-017)	1.000 EA
35EP3300A33	SPL FACE MTD EP -ENCL-205 BRG	1.000 EA
51XN1032A20	10-32 X 1 1/4 HX WS SL SR	2.000 EA
51XB1214A16	12-14X1.00 HXWSSLD SERTYB	1.000 EA
35FH4005A32SP	IEC FH NO GRSR W/3 HOLES - PRIMED	1.000 EA
51XW1032A06	10-32 X .38, TAPTITE II, HEX WSHR SLTD S	3.000 EA
35CB4521GX	CONDUIT BOX LID KIT	1.000 EA
51XW0832A07	8-32 X .44, TAPTITE II, HEX WSHR SLTD SE	4.000 EA
HW2501D13	KEY, 3/16 SQ X 1.375	1.000 EA
HA7000A04	KEY RETAINER 0.625 DIA SHAFTS	1.000 EA
85XU0407S04	4X1/4 U DRIVE PIN STAINLESS	2.000 EA
MJ1000A02	GREASE, POLYREX EM EXXON (USe 4824-15A)	0.050 LB
35FN3002A05SP	EXFN, PLASTIC, 6.376 OD, .638 ID	1.000 EA
MG1000Y03	MUNSELL 2.53Y 6.70/ 4.60, GLOSS 20,	0.017 GA
MG1025A01	WILKOFASST SG, 770.02, CLEAR SEMI-GLOSS	0.017 GA
HA3100A15	THRUBOLT 10-32 X 8.375	4.000 EA

Parts List (continued)		
Part Number	Description	Quantity
LC0007	CONNECTION LABEL	1.000 EA
LB1118	LABEL,WARNING (ROLL LABEL)	1.000 EA
LB1417	LABEL CARTON 6X4 PERFORATED BLANK ROLLS	1.000 EA
NP3690L	SS SUPER-E UL CSA CE CC THERMAL REV MTG	1.000 EA
36PA1000	PKG GRP, PRINT PK1016A06	1.000 EA
MN416A01	TAG-INSTAL-MAINT no wire (1100/bx) 11/14	1.000 EA
FE-0000001	ZRTG FE ASSEMBLY	1.000 EA
PE-0000001	ZRTG PE ASSEMBLY	1.000 EA

AC Induction Motor Performance Data

Record # 65456 - Typical performance - not guaranteed values

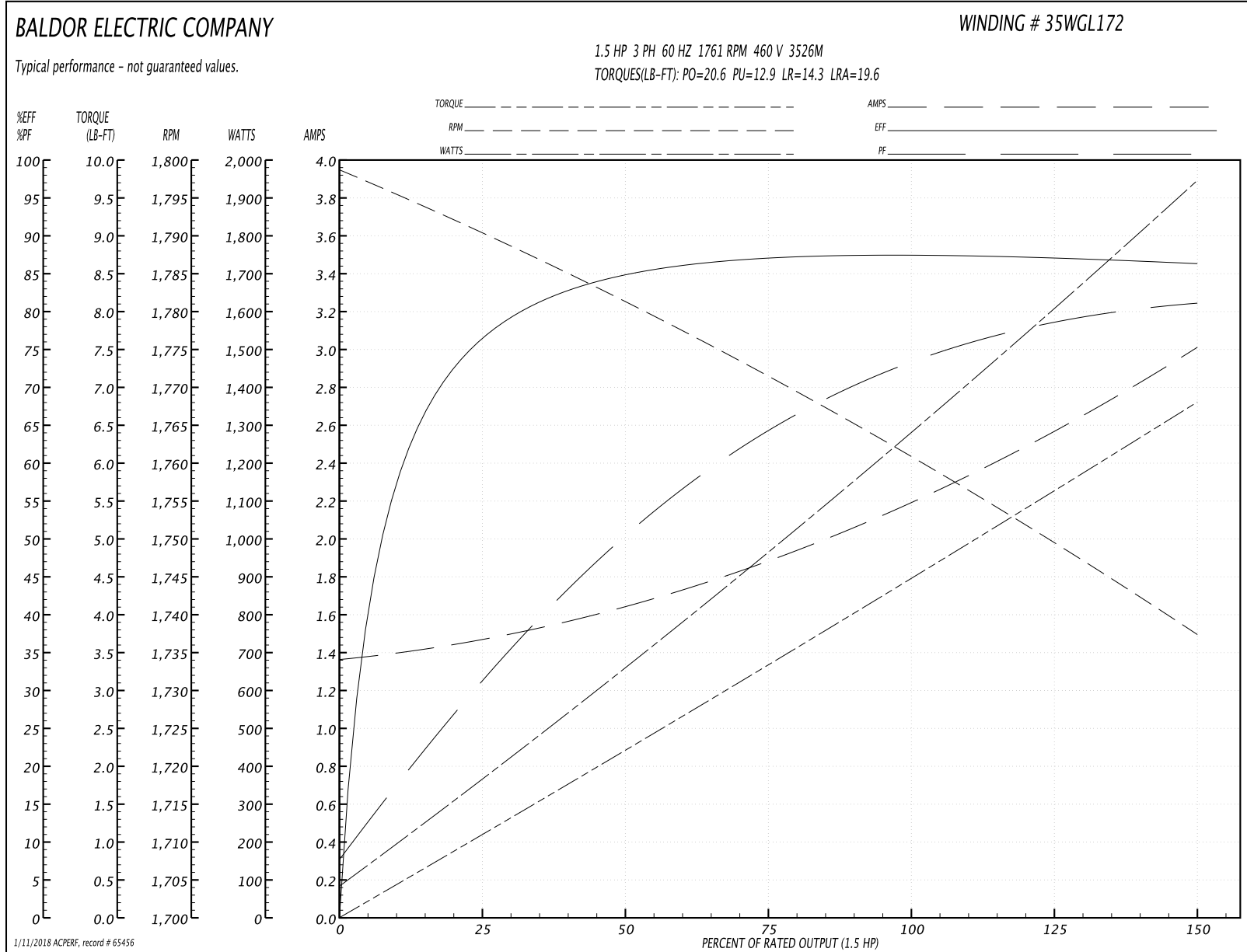
Winding: 35WGL172-R005	Type: 3526M	Enclosure: TEFC
-------------------------------	--------------------	------------------------

Nameplate Data				460 V, 60 Hz: High Voltage Connection	
Rated Output (HP)	1.5			Full Load Torque	4.46 LB-FT
Volts	208-230/460//190/380			Start Configuration	direct on line
Full Load Amps	4.6-4.4/2.2//5/2.5			Breakdown Torque	20.6 LB-FT
R.P.M.	1750//1450			Pull-up Torque	12.9 LB-FT
Hz	60//50	Phase	3	Locked-rotor Torque	14.3 LB-FT
NEMA Design Code	B	KVA Code	M	Starting Current	19.6 A
Service Factor (S.F.)	1.15			No-load Current	1.38 A
NEMA Nom. Eff.	86.5	Power Factor	73	Line-line Res. @ 25°C	8.81 Ω
Rating - Duty	40C AMB-CONT			Temp. Rise @ Rated Load	34°C
S.F. Amps				Temp. Rise @ S.F. Load	40°C
				Locked-rotor Power Factor	49.6
				Rotor inertia	0.154 LB-FT ²

Load Characteristics 460 V, 60 Hz, 1.5 HP

% of Rated Load	25	50	75	100	125	150	S.F.
Power Factor	32	51	64	73	78	81	76
Efficiency	76.5	84.7	86.9	87.5	87.2	86.2	87.3
Speed	1790	1781	1772	1761	1750	1737	1754
Line amperes	1.45	1.63	1.88	2.2	2.58	3	2.43

Performance Graph at 460V, 60Hz, 1.5HP Typical performance - Not guaranteed values



AC Induction Motor Performance Data

Record # 65457 - Typical performance - not guaranteed values

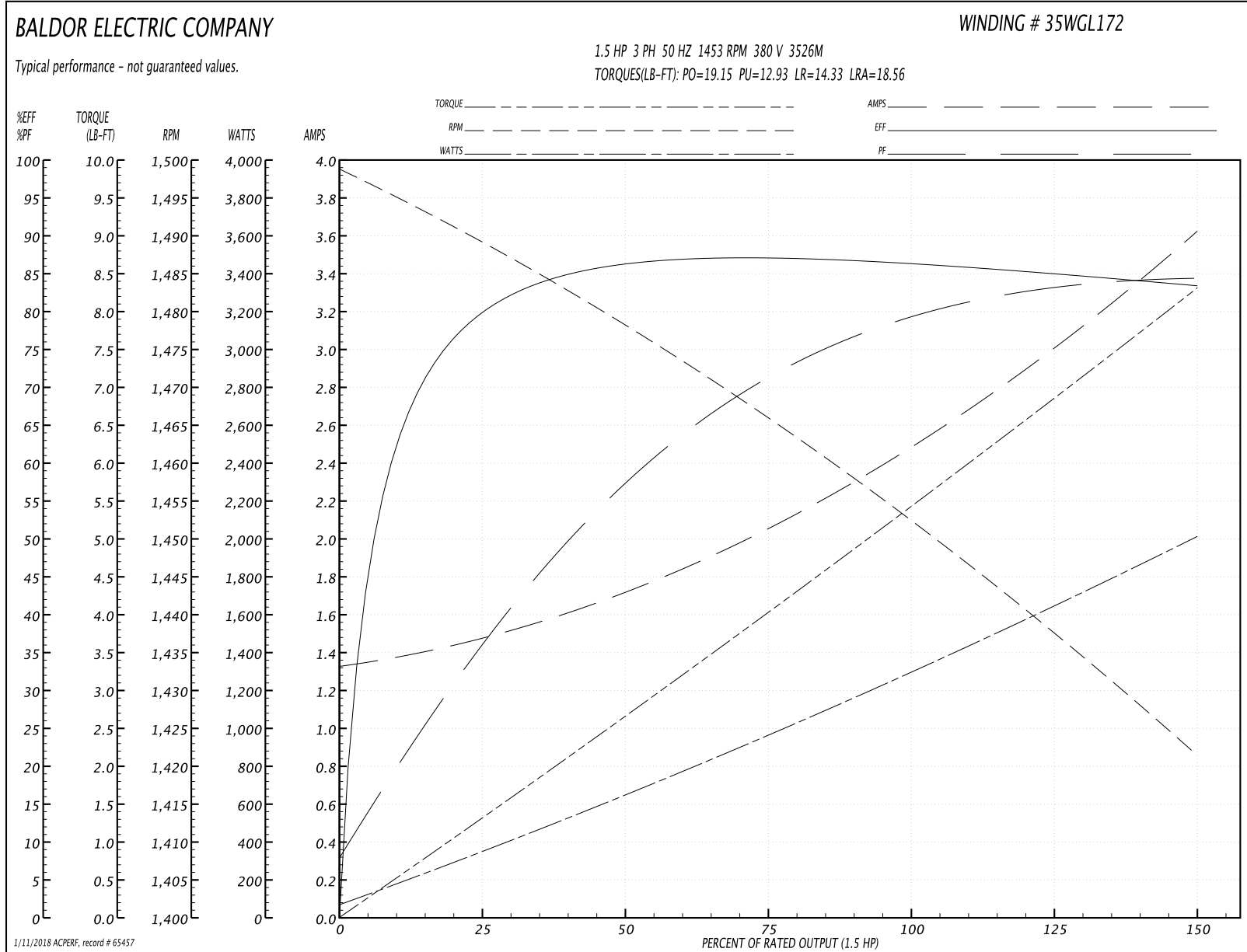
Winding: 35WGL172-R005	Type: 3526M	Enclosure: TEFC
-------------------------------	--------------------	------------------------

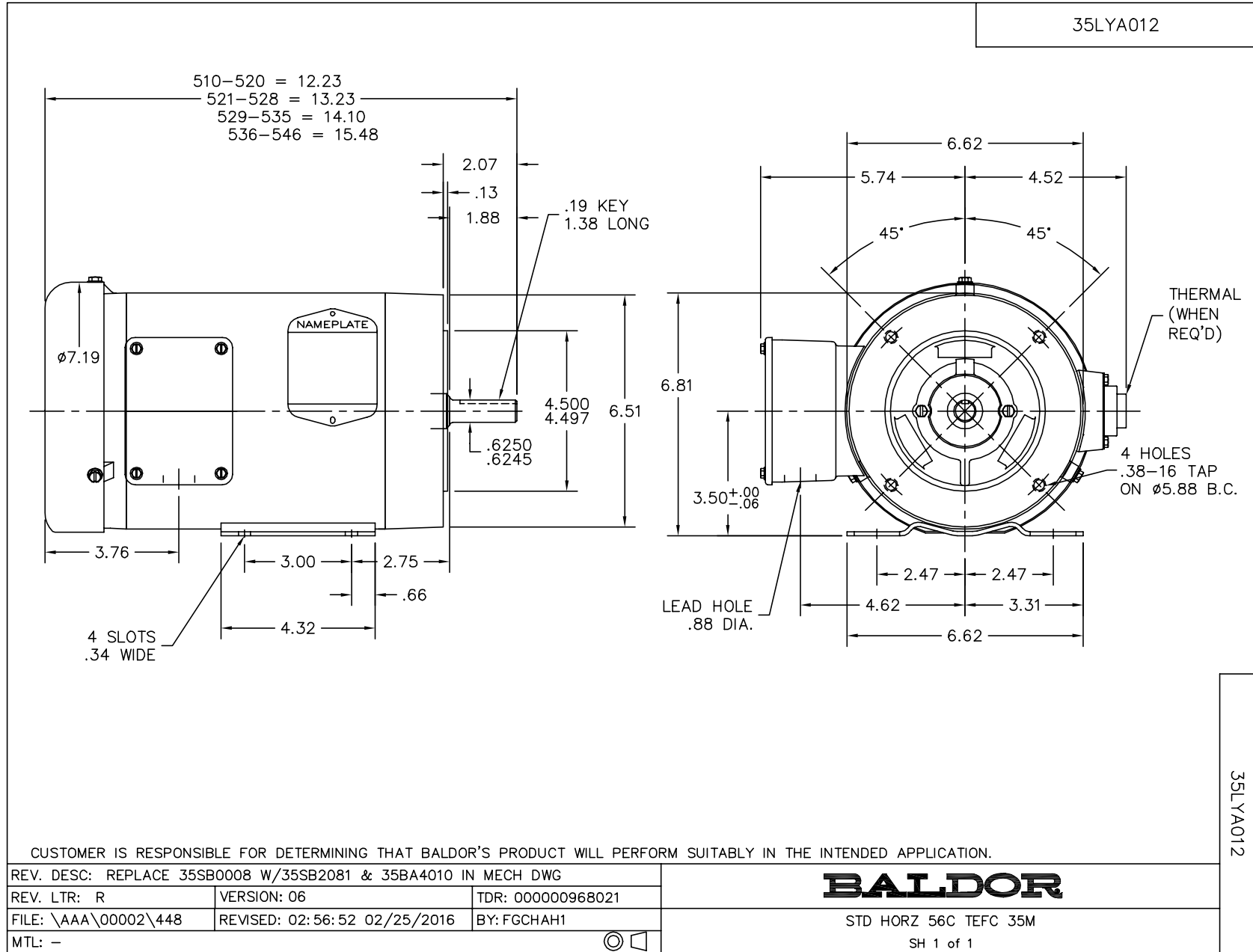
Nameplate Data				380 V, 50 Hz: High Voltage Connection	
Rated Output (HP)	1.5			Full Load Torque	5.41 LB-FT
Volts	208-230/460//190/380			Start Configuration	direct on line
Full Load Amps	4.6-4.4/2.2//5/2.5			Breakdown Torque	19.15 LB-FT
R.P.M.	1750//1450			Pull-up Torque	12.93 LB-FT
Hz	60//50	Phase	3	Locked-rotor Torque	14.33 LB-FT
NEMA Design Code	B	KVA Code	M	Starting Current	18.56 A
Service Factor (S.F.)	1.15			No-load Current	1.35 A
NEMA Nom. Eff.	86.5	Power Factor	73	Line-line Res. @ 25°C	8.81 Ω
Rating - Duty	40C AMB-CONT			Temp. Rise @ Rated Load	42°C
S.F. Amps				Temp. Rise @ S.F. Load	52°C
				Locked-rotor Power Factor	55.1
				Rotor inertia	0.154 LB-FT ²

Load Characteristics 380 V, 50 Hz, 1.5 HP

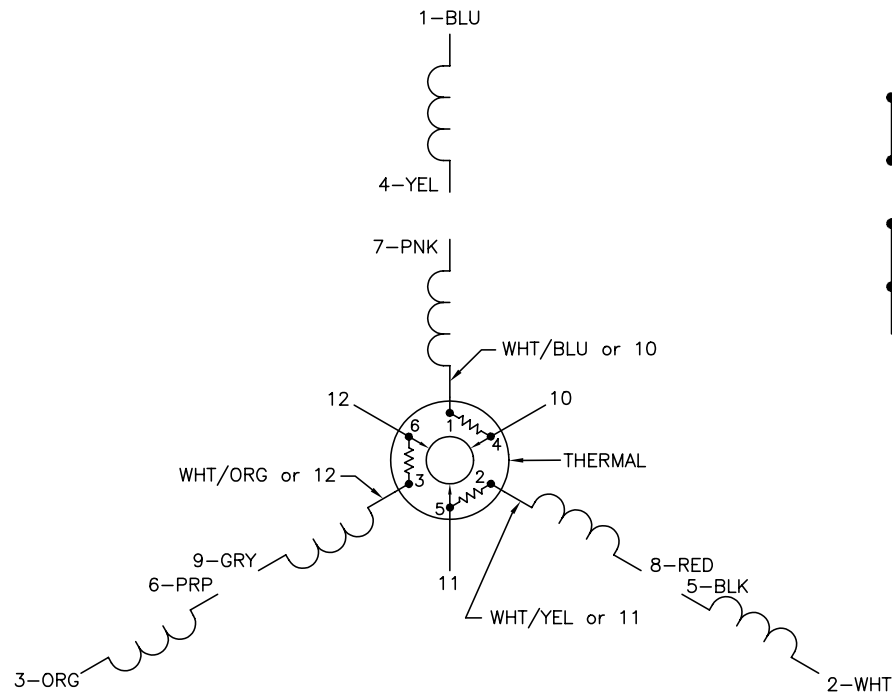
% of Rated Load	25	50	75	100	125	150	S.F.
Power Factor	37	58	71	78	83	85	81
Efficiency	79.6	86.1	86.8	86.5	85.2	83.2	85.7
Speed	1489	1478	1466	1453	1438	1421	1444
Line amperes	1.45	1.7	2.05	2.5	3.02	3.61	2.81

Performance Graph at 380V, 50Hz, 1.5HP Typical performance - Not guaranteed values

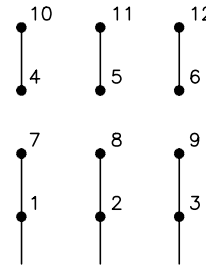




CD0007

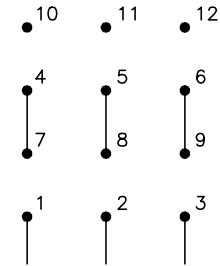


LOW VOLTAGE
(2Y)



LINE

HIGH VOLTAGE
(1Y)



LINE

NOTES:

1. INTERCHANGE ANY TWO LINE LEADS TO REVERSE ROTATION.
2. ACTUAL NUMBER OF INTERNAL PARALLEL CIRCUITS MAY VARY.
3. LEAD COLORS ARE OPTIONAL. LEADS MUST ALWAYS BE NUMBERED AS SHOWN.

REV. DESC: ADDED "CK" PLANT CODE			
REV. LTR: E	BY: EAH	REVISED: 05/06/99 17:1	TDR: 0181040
L00000		FILE: AAA00008370	MDL: -
		MTL: -	

BALDOR ELECTRIC Co.

3PH, DV, THERMAL, 12 LEADS

CD0007

Marketing maintained PDF of MN416:

<http://www.baldor.com/support/Literature/Load.ashx/MN416?ManNumber=MN416>