

BALDOR® • RELIANCE

Product Information Packet

KECO, INC

34G610R265G1

.75HP,1725RPM,3PH,60HZ,56C,3426M,TEFC,F1

Part Detail							
Revision:	C	Status:	INA/A	Change #:		Proprietary:	Yes
Type:	AC	Elec. Spec:	34WGR265	CD Diagram:	CD0007	Mfg Plant:	
Mech. Spec:	34G610	Layout:	34LYG610	Poles:	04	Created Date:	06-19-2017
Base:	RG	Eff. Date:	09-21-2017	Leads:	12#18		

Specs			
Enclosure:	TEFC	Inverter Code:	Not Inverter
Frame:	56C	KVA Code:	P
Frame Material:	Steel	Lifting Lugs:	No Lifting Lugs
Output @ Frequency:	.750 HP @ 60 HZ	Locked Bearing Indicator:	Locked Bearing
Synchronous Speed @ Frequency:	1800 RPM @ 60 HZ	Motor Lead Quantity/Wire Size:	12 @ 18 AWG
Voltage @ Frequency:	208.0 V @ 60 HZ	Motor Lead Exit:	Ko Box
	230.0 V @ 60 HZ	Motor Lead Termination:	Flying Leads
	460.0 V @ 60 HZ	Motor Type:	3426M
XP Class and Group:	None	Mounting Arrangement:	F1
XP Division:	Not Applicable	Power Factor:	59
Auxillary Box:	No Auxillary Box	Product Family:	General Purpose
Auxillary Box Lead Termination:	None	Pulley End Bearing Type:	Ball
Base Indicator:	Rigid	Pulley Face Code:	C-Face
Bearing Grease Type:	Polyrex EM (-20F +300F)	Pulley Shaft Indicator:	Standard
Blower:	None	Rodent Screen:	None
Current @ Voltage:	1.500 A @ 460.0 V	RoHS Status:	ROHS COMPLIANT
	2.000 A @ 208.0 V	Shaft Extension Location:	Pulley End
	2.800 A @ 208.0 V	Shaft Ground Indicator:	No Shaft Grounding

	3.000 A @ 230.0 V	Shaft Rotation:	Reversible
Design Code:	B	Shaft Slinger Indicator:	No Slinger
Drip Cover:	No Drip Cover	Speed Code:	Single Speed
Duty Rating:	CONT	Motor Standards:	NEMA
Electrically Isolated Bearing:	Not Electrically Isolated	Starting Method:	Direct on line
Feedback Device:	NO FEEDBACK	Thermal Device - Bearing:	None
Front Face Code:	Standard	Thermal Device - Winding:	None
Front Shaft Indicator:	None	Vibration Sensor Indicator:	No Vibration Sensor
Heater Indicator:	No Heater	Winding Thermal 1:	Automatic Thermal Overload
Insulation Class:	B	Winding Thermal 1 Location:	SB
		Winding Thermal 2:	None

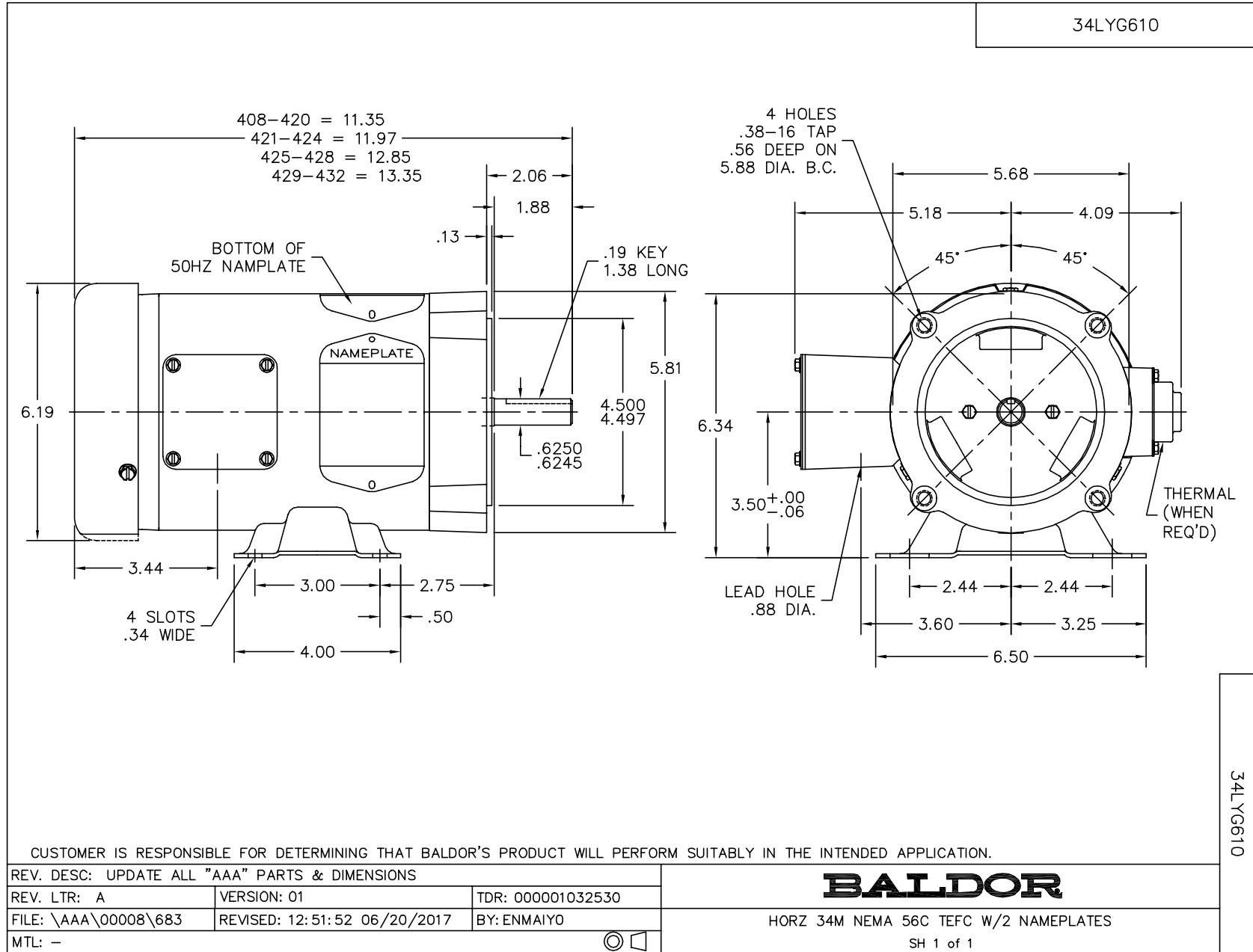
Nameplate NP3694L										
CAT.NO.	DM-0075.3PH.01.A									
SPEC.	34G610R265G1									
HP	.75									
VOLTS	208-230/460									
AMPS	2-3/1.5									
R.P.M.	1725									
FRAME	56C			HZ	60			PH	3	
SER.F.	1.15		CODE	P		DES.	B		CLASS	B
NEMA NOM. EFF.	75.5			P.F.	59					
RATING	40C AMB-CONT									
CC								USABLE AT 208V	2.8	
DE	6203			ODE	6203					
ENCL	TEFC		SN							

Nameplate NP3699L										
CAT.NO.	DM-0075.3PH.01.A									
SPEC.	34G610R265G1									
HP	.75									
VOLTS	190/380									
AMPS	3.2/1.6									
R.P.M.	1425									
FRAME	56C				HZ	50			PH	3
SER.F.	1.15		CODE	M	DES.	B		CLASS	B	
NEMA NOM. EFF.	75.5			P.F.	67					
RATING	40C AMB-CONT									
CC									USABLE AT 208V	
DE	6203				ODE	6203				
ENCL	TEFC		SN							

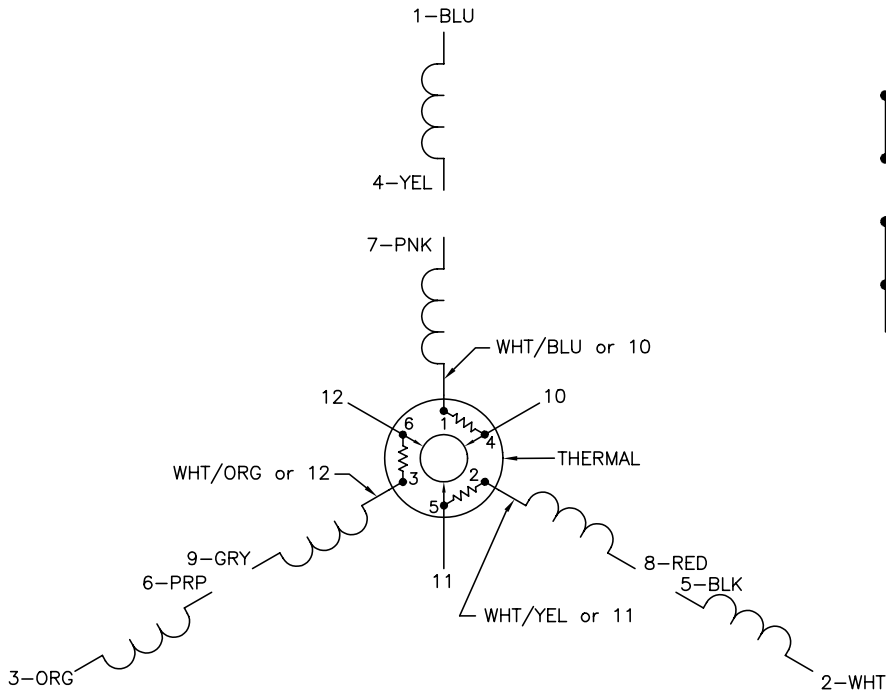
Parts List		
Part Number	Description	Quantity
SA342470	SA 34G610R265G1	1.000 EA
RA330899	RA 34G610R265G1	1.000 EA
NS2512A01	INSULATOR, CONDUIT BOX X	1.000 EA
34CB3002A	CB CAST W/.88 DIA HOLE	1.000 EA
34GS1029A01	GASKET, CONDUIT BOX	1.000 EA
51XB1016A07	10-16 X 7/16 HXWSSLD SERTYB	2.000 EA
11XW1032G06	10-32 X .38, TAPTITE II, HEX WSHR SLTD U	1.000 EA
34EP3102A01SP	FR ENDPLATE, MACH	1.000 EA
HW5100A03	WAVY WASHER (W1543-017)	1.000 EA
34EP3300A24SP	PU ENDPLATE, MACH	1.000 EA
51XN1032A20	10-32 X 1 1/4 HX WS SL SR	2.000 EA
34FN3002A01SP	EXTERNAL FAN, PLASTIC, .637/.639 HUB W/	1.000 EA
34FH4002A01SP	IEC FH NO GREASER PRIMED	1.000 EA
51XW1032A06	10-32 X .38, TAPTITE II, HEX WSHR SLTD S	3.000 EA
34CB4517	CB LID 4 MTG HOLES .22 DIA STAMPED, FOR	1.000 EA
34GS1031A01	GASKET, FLAT CONDUIT BOX LID (LEXIDE)	1.000 EA
51XW0832A07	8-32 X .44, TAPTITE II, HEX WSHR SLTD SE	4.000 EA
MG1025A01	WILKOFASST SG, 770.02, CLEAR SEMI-GLOSS	0.014 GA
85XU0407S04	4X1/4 U DRIVE PIN STAINLESS	4.000 EA
HA3100A45	THRUBOLT 10-32 X 8.875	4.000 EA
HW2501D13	KEY, 3/16 SQ X 1.375	1.000 EA
HA7000A04	KEY RETAINER 0.625 DIA SHAFTS	1.000 EA
LB1118	LABEL,WARNING (ROLL LABEL)	1.000 EA
LC0007	CONNECTION LABEL	1.000 EA

Parts List (continued)		
Part Number	Description	Quantity
NP3694L	SS SUPER-E UL CSA CC THERMAL REV MTG KEC	1.000 EA
NP3699L	SS SUPER-E NO LOGOS CC REV MTG KECO	1.000 EA
MN416A01	TAG-INSTAL-MAINT no wire (1100/bx) 11/14	1.000 EA
34PA1002	PKG GRP, PRINT PK1001A01	1.000 EA
LB1417	LABEL CARTON 6X4 PERFORATED BLANK ROLLS	1.000 EA

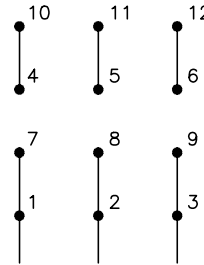
No performance data has been
assigned to this product.



CD0007

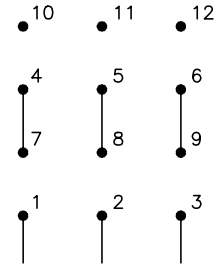


LOW VOLTAGE
(2Y)



LINE

HIGH VOLTAGE
(1Y)



LINE

NOTES:

1. INTERCHANGE ANY TWO LINE LEADS TO REVERSE ROTATION.
2. ACTUAL NUMBER OF INTERNAL PARALLEL CIRCUITS MAY VARY.
3. LEAD COLORS ARE OPTIONAL. LEADS MUST ALWAYS BE NUMBERED AS SHOWN.

REV. DESC: ADDED "CK" PLANT CODE			
REV. LTR: E	BY: EAH	REVISED: 05/06/99 17:1	TDR: 0181040
L00000		FILE: AAA00008370	MDL: -
		MTL: -	

BALDOR ELECTRIC Co.

3PH, DV, THERMAL, 12 LEADS

CD0007