

Jr. ON A CART

Designed initially for marine applications, the 50 Series pump has proven itself effective in the consumer/industrial market. The 50 Series can be used for flood prevention, pool/pond pump, spill clean-up, and septic tank pumpout. The 50 Series can pass solids up to 1.5" in diameter, and can run dry continuously without damage. Standard equipment includes .5-HP 115/230-Volt electric motor with 10Ft electrical cord and grounded plug. Whatever your applications demands, **Keco's** 50 Series diaphragm pump can facilitate your needs.



OPTIONS

ENGINE OPTIONS

- Briggs & Stratton 3.5-HP
- Honda 4-HP

MOTOR OPTIONS

- .5-HP 115/230-Volt
- .5-HP Exp.Proof
- .75-HP 115/230 Volt
- .75-HP Exp Proof

PUMP w/ HANDLES



OPTIONAL COVER



CONTROL OPTIONS



- Push to Start With Timer



- On/Off Switch



- Explosion-Proof Push to Start W/Timer



- Explosion-Proof On/Off Switch

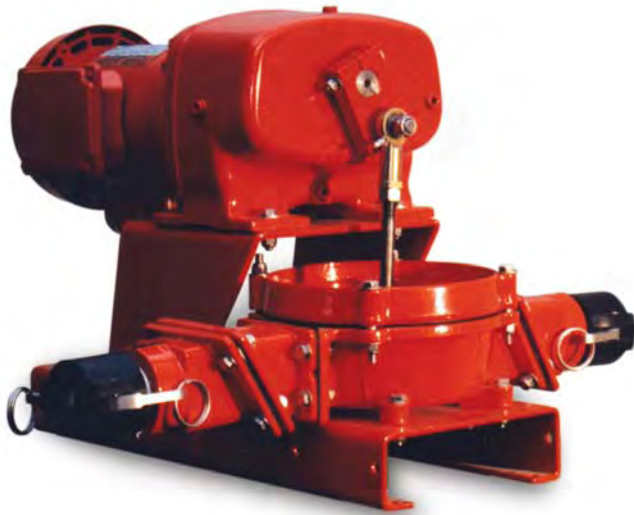


- Explosion-Proof Key On/Off



DIAPHRAGM PUMPS

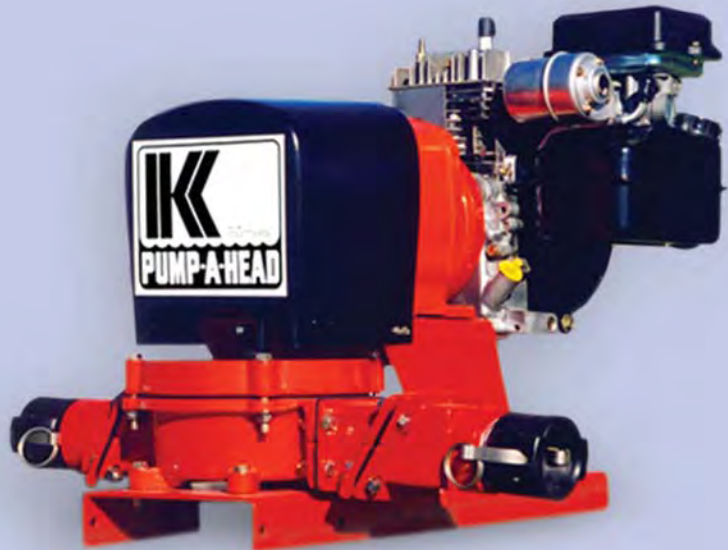
50 SERIES



Keco strives to build the best, longest lasting, and most effective diaphragm pump on the market. **Keco's** 50 Series pump, is a rugged, durable, and multi-purpose diaphragm pump. Also known as the "Junior," this pump is built for a variety of pumping applications. Assembled using all .5" stainless steel nuts and bolts, and treated with a triple layer coating, the Model 50 is built to last! New Encapsulated valves packs provide tight seals and impressive suction with every stroke. If you demand a versatile, all-purpose diaphragm pump, look no further then **Keco's** 50 Series.

Jr. WITH HANDLES

The 50 Series pump can be outfitted with a variety of optional equipment to meet your pumping demands. If electric motors are unfavorable, gas engines can solve the problem. If you need mobility, the 50 Series pump can be mounted onto a rugged steel cart to provide easy movement. Handles can also be installed for easy lifting and portability. **Keco** designed the 50 Series pump to be adaptable to all types of applications. Whether your preference is gas or electric, portable or stationary, **Keco's** 50 Series is the most versatile pump available.



KECO[®]
pump and equipment



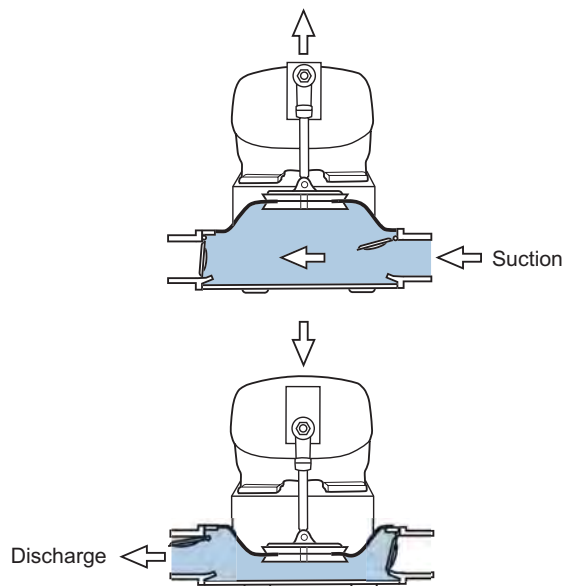
DIAPHRAGM PUMPS

CHOOSE THE PUMP THAT FITS YOUR NEEDS!



HOW IT WORKS

Diaphragm Pumps are one of the oldest pumping techniques employed by man. Mechanically similar to a plunger, the diaphragm pump bowl is filled when the diaphragm rises, and cleared when the diaphragm compresses. The reciprocating action causes the suction/discharge valve to fully open and close. Oversized inlet/outlets allow **Keco's** diaphragm pumps to pass 1.5" solids. This simple and effective pump has proven to be a reliable and durable workhorse throughout the world's busiest marinas.

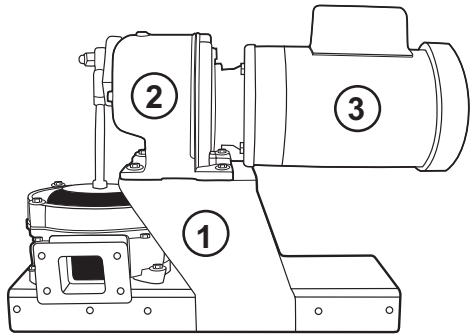


COMPARE IT TO OTHERS



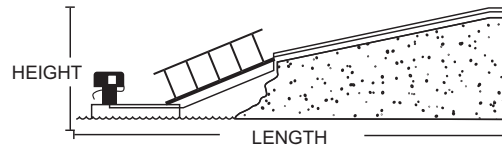
Keco's self-priming diaphragm pumps are based on a time-tested design that has been on the market for over 30 years. **Keco** diaphragm pumps are assembled using only 300-grade stainless steel hardware. All exposed surfaces are triple coated using zinc, epoxy and urethane to withstand the most difficult marine environment. Nitrile encapsulated full-opening swing check valves gives the **Keco** diaphragm pump its impressive solids handling ability. The Nitrile valves are completely protected from corrosion and ensure a consistent and reliable seal year for many years.

DIAPHRAGM PUMPS



1. FRAME 2. GEAR BOX 3. MOTOR

Keco developed a pump that would stand up to a wide variety of liquids, and be able to handle the most severe environmental conditions imaginable. Although initially targeting marine applications, **Keco's** diaphragm pump has proven itself effective as a versatile multi-purpose pump. **Keco's** diaphragm pump has the ability to pump everything from mud to concrete slurry. The self-priming diaphragm pump is able to run dry without damage. **Keco** offers a variety of pump options to meet your needs. Please allow our staff to assist you in determining the most effective options, which are right for you.



MARINE



- bilge pumpout
- holding tank pumpout
- water evacuation
- oil spill clean-up
- utility pump

PERSONAL



- pool/pond pump
- well pump
- flood evacuation
- septic tank pumpout
- private dock

INDUSTRIAL



- liquid transfer
- abrasive pumping
- sewage collection
- multi-Purpose utility pump
- manhole evacuation

PIPE	LENGTH					
	.5 HP PUMP MOTOR OPT.			.75 HP PUMP MOTOR OPT.		
	2"	2.5"	3"	2"	2.5"	3"
1	237	603	1900	365	967	2900
2	225	600	1800	350	934	2800
3	215	566	1700	336	900	2700
4	200	533	1600	325	867	2600
5	187	500	1400	313	834	2500
6	175	466	1400	300	800	2400
7	167	437	1300	258	767	2300
8	150	400	1260	275	734	2200
9	137	366	1100	263	700	2100
10	125	332	1000	250	667	2000
11	112	300	900	238	634	1900
12	110	266	800	226	600	1800
13	87	233	700	214	567	1700
14	75	200	600	202	539	1600
15	67	166	500	190	500	1500
16	50	133	400	178	467	1400
17	37	100	300	166	434	1300
18	25	66	200	154	400	1200
19	12	33	100	142	367	1100
20	DO NOT OPERATE .5 HP PUMP IN THIS RANGE			130	334	1000
21				118	300	900
22				106	267	800
23				94	234	700
24				82	200	600
25				70	167	500
26				58	134	400
27				46	100	300
28				34	67	200
29				22	34	100
30	*	*	*			

HEIGHT



Specifications

Model 40 - Portable

Design Considerations

- The pump shall be designed for viscous material handling sanitary waste, slurries and solids up to 1½" spherical diameter.
- The 8" diaphragm to be of Neoprene** reinforced with 2-ply nylon. Two cast aluminum plates support the diaphragm.
- The motor/engine shall drive an eccentric connected to a stainless steel drive rod by a rod end bearing assembly. The rod end bearing shall have an oil filled sintered steel ball and be equipped with a lubricating fitting.
- Weighted encapsulated inlet and discharge valves are replaceable.
- Valves seat against a raised bezel on a replaceable encapsulated seating plate. Valves are held in place using ½" stainless steel hardware 316 grade.
- Suction / Discharge flow can run perpendicular with frame, or inline with frame. Customer to specify at time of order. Standard bowl / flow runs perpendicular with frame.
- Explosion proof, Totally Enclosed Fan Cooled 110-220 Single Phase AC 60 Hz motors, 3 ½ HP Briggs and Stratton gasoline or 12-24V DC motors available
- Suction and Discharge fittings available in 1 ½" or 2" female tread NPT.
- Quick connect coupler fitting on suction and discharge port.
- Pump capable of 18" Hg / 13 PSI with a flow rate to 30 GPM.

Capacity & Dimensions

MODEL	L"	W"	H"	GPM
40	46"	23"	32"	2-25

Weight: approximately 150 lbs.

Materials

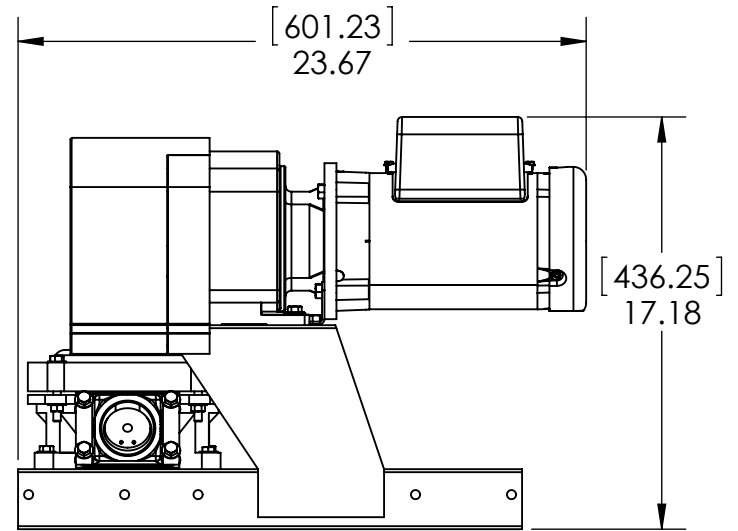
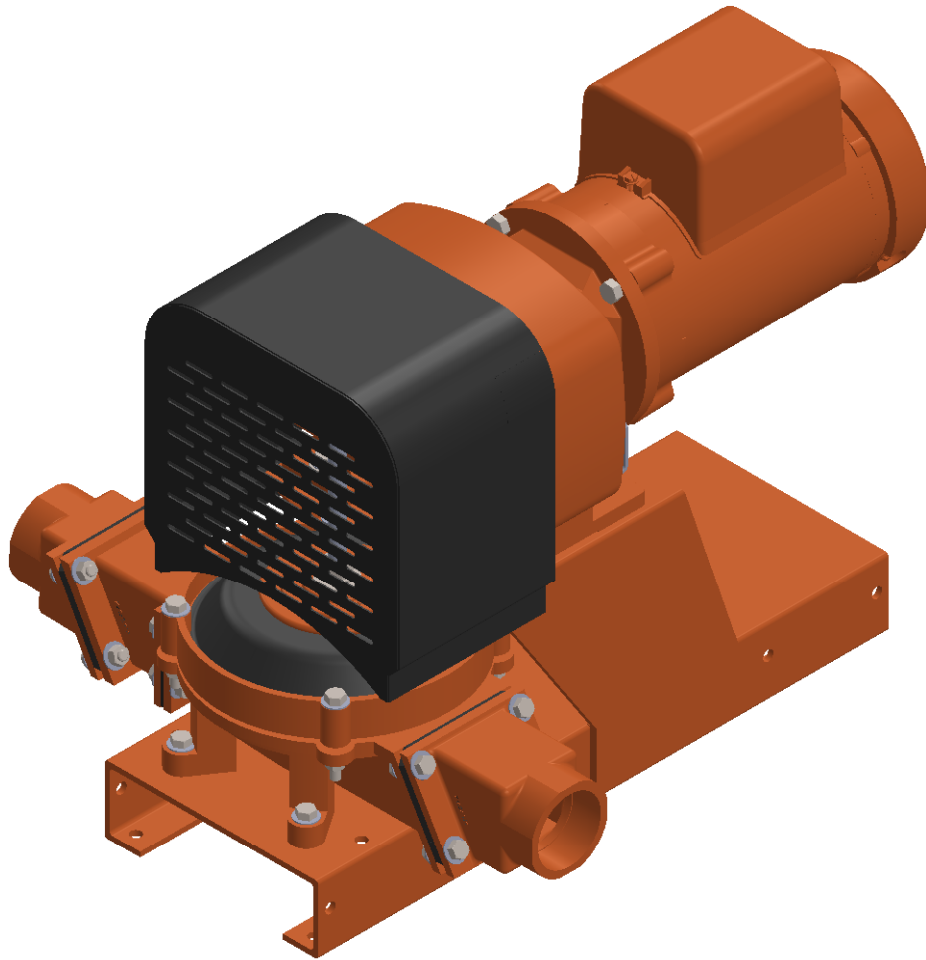
The pump shall include but not be limited to the following components

- Aluminum surfaces shall be sandblasted (SP10), zinc, epoxy and urethane coated
- Pump body to be cast aluminum (marine grade) including pump bowl, retaining ring, elbows, flanges and diaphragm reinforcing plates.
- Brass castings are optional.
- Steel structural support frame sandblasted (SP10), zinc, baked epoxy and urethane coated.
- Cart to be pressure washer type with pneumatic wheels. Pump to be bolted to cart using 316-grade stainless steel hardware. Cart to be sandblasted (SP10), zinc, baked epoxy and urethane coated.
- All nuts, bolts, washers and hardware to be 316-grade stainless steel.

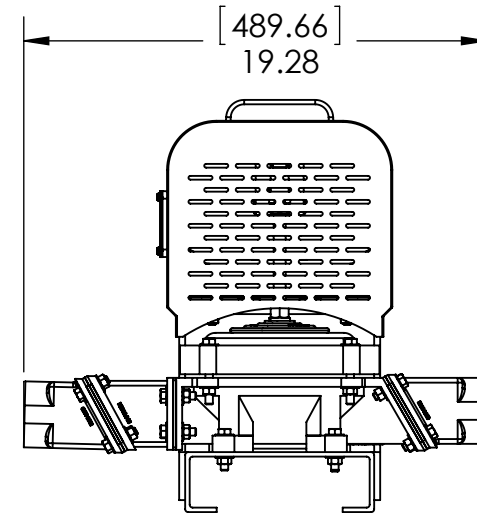
* 50 Hz Motors available.

** Nitrile or Hypalon Diaphragm available.

The compatibility and/or application information is presented as a guide only. Other system factors may effect this information. Proper installation and selection of equipment, components, operation and maintenance are not the responsibility of KECO



RIGHT



FRONT

NOTES:
 3/4 HP TEFC MOTOR DEPICTED
 ALTERNATE MOTORS AVAILABLE
 ORIENTATION 1 SHOWN

PROPRIETARY AND CONFIDENTIAL

THE INFORMATION CONTAINED
 IN THIS DRAWING IS THE SOLE
 PROPERTY OF KECO PUMP AND
 EQUIPMENT. ANY
 REPRODUCTION IN PART OR AS
 A WHOLE WITHOUT THE
 WRITTEN PERMISSION OF
 KECO PUMP AND EQUIPMENT IS
 PROHIBITED.

UNLESS OTHERWISE SPECIFIED:

DIMENSIONS ARE IN INCHES
 TOLERANCES:
 FRACTIONAL $\pm 1/32$
 ONE PLACE DECIMAL $\pm .1$
 TWO PLACE DECIMAL $\pm .03$
 THREE PLACE DECIMAL $\pm .020$
 ANGULAR $\pm .5^\circ$

MATERIAL

DRAWN	AWS	
REVISION #	PREVIOUS	CURRENT
	1.0	1.0

DATE: 5/5/2015

COMMENTS:

KECO KECO PUMP AND EQUIPMENT
 WWW.PUMPAHEAD.COM

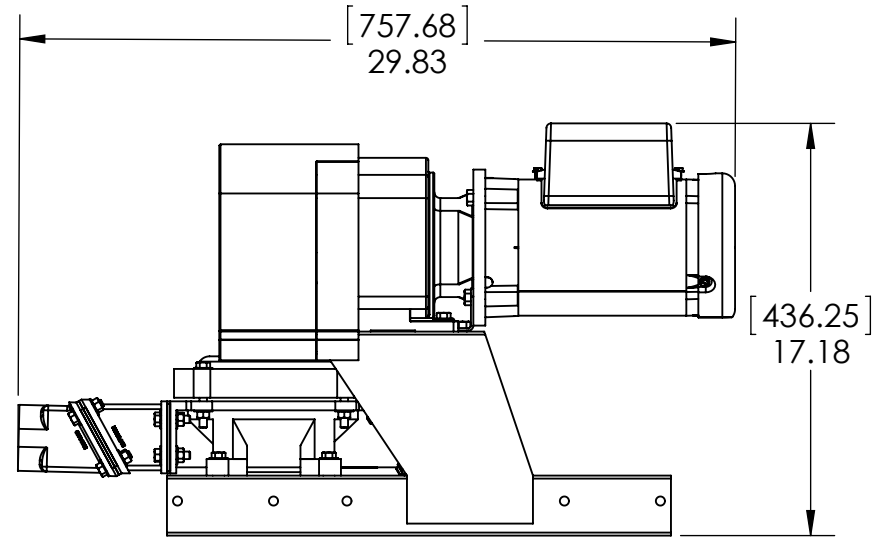
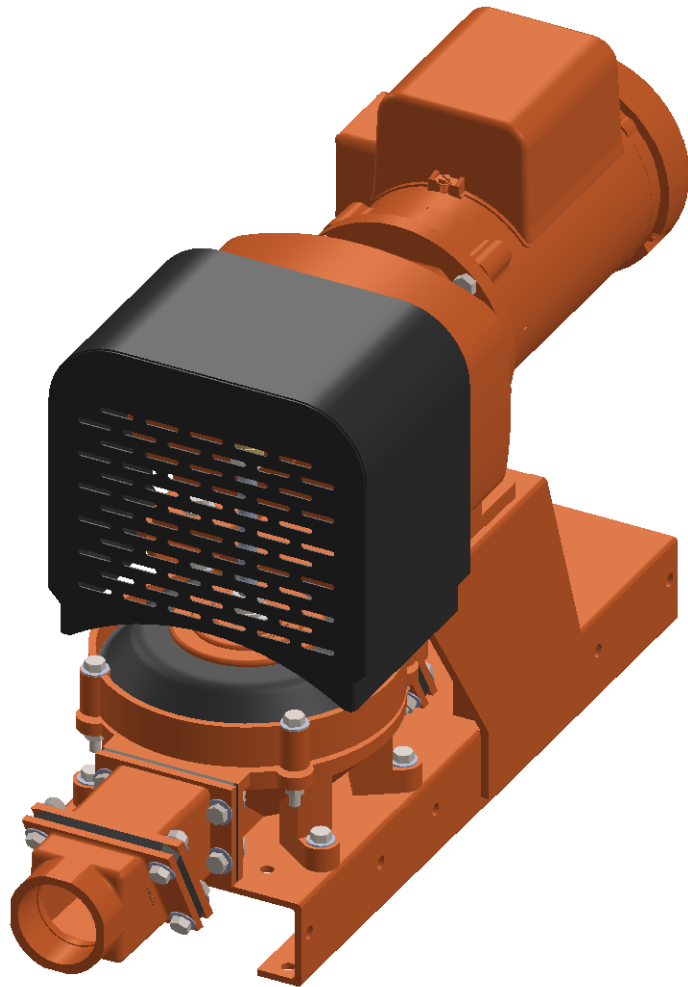
PART NUMBER - TITLE

50 E SERIES SINGLE DIAPHRAGM
 VIEW 1

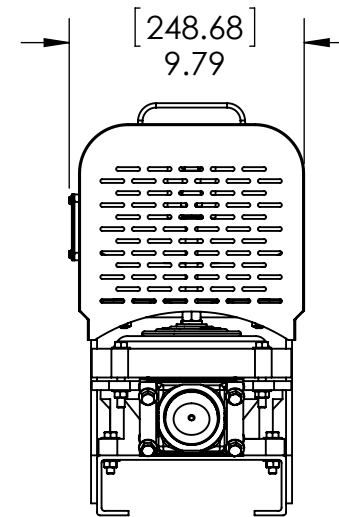
DIMENSION: INCHES / (XX) MM

SCALE: 1:5

SHEET 1 OF 6



RIGHT



FRONT

NOTES:
 3/4 HP TEFC MOTOR DEPICTED
 ALTERNATE MOTORS AVAILABLE
 ORIENTATION 3 SHOWN

PROPRIETARY AND CONFIDENTIAL

THE INFORMATION CONTAINED
 IN THIS DRAWING IS THE SOLE
 PROPERTY OF KECO PUMP AND
 EQUIPMENT. ANY
 REPRODUCTION IN PART OR AS
 A WHOLE WITHOUT THE
 WRITTEN PERMISSION OF
 KECO PUMP AND EQUIPMENT IS
 PROHIBITED.

UNLESS OTHERWISE SPECIFIED:

DIMENSIONS ARE IN INCHES
 TOLERANCES:
 FRACTIONAL $\pm 1/32$
 ONE PLACE DECIMAL $\pm .1$
 TWO PLACE DECIMAL $\pm .03$
 THREE PLACE DECIMAL $\pm .020$
 ANGULAR $\pm .5^\circ$

MATERIAL

DRAWN	AWS	
REVISION #	PREVIOUS	CURRENT
	1.0	1.0

DATE: 5/5/2015

COMMENTS:

KECO KECO PUMP AND EQUIPMENT
 WWW.PUMPAHEAD.COM

PART NUMBER - TITLE

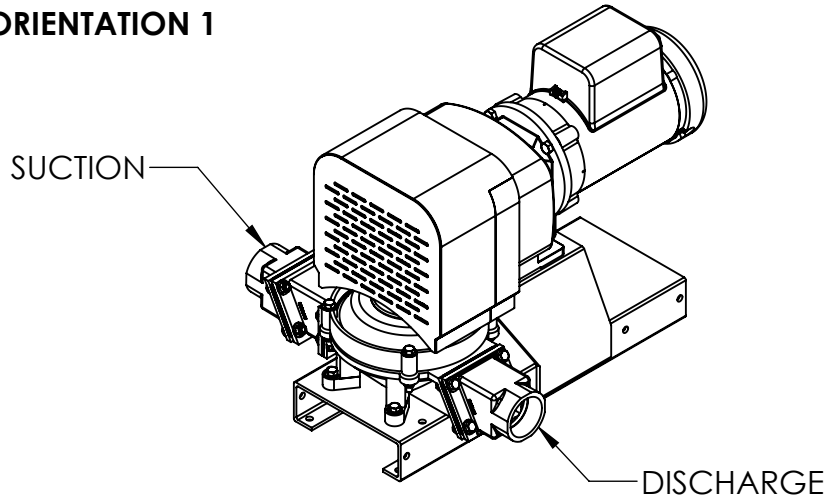
50 E SERIES SINGLE DIAPHRAGM
 VIEW 3

DIMENSION: INCHES / (XX) MM

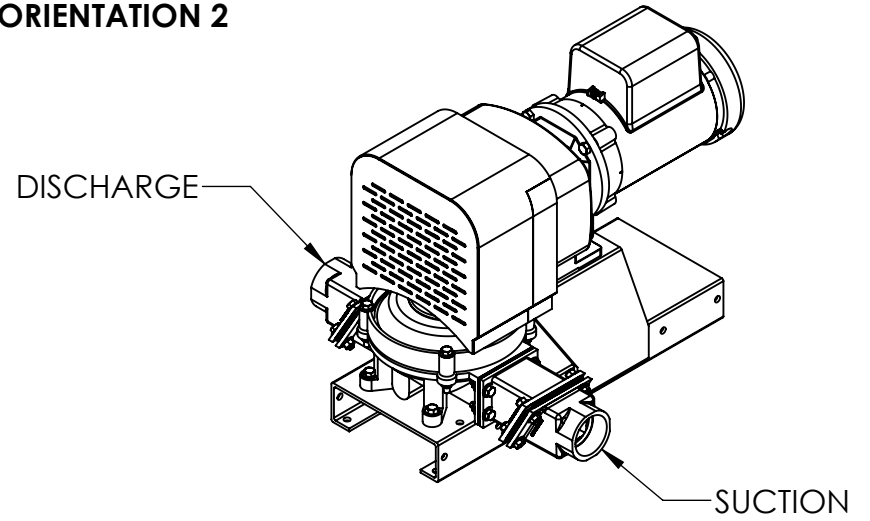
SCALE: 1:5

SHEET 2 OF 6

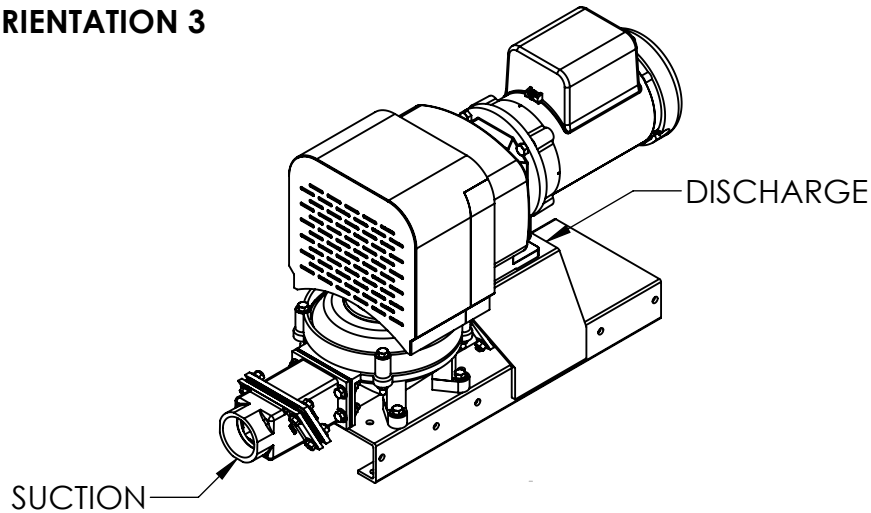
ORIENTATION 1



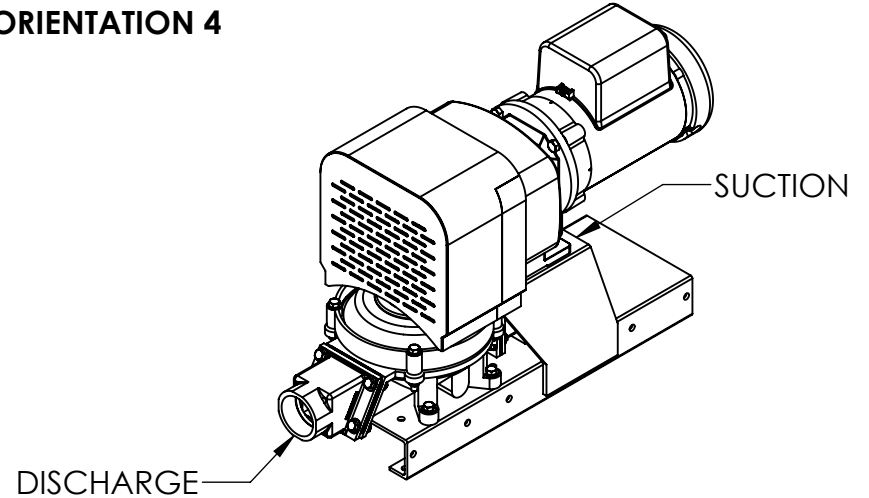
ORIENTATION 2



ORIENTATION 3



ORIENTATION 4



NOTES:

PROPRIETARY AND CONFIDENTIAL

THE INFORMATION CONTAINED IN THIS DRAWING IS THE SOLE PROPERTY OF KEKO PUMP AND EQUIPMENT. ANY REPRODUCTION IN PART OR AS A WHOLE WITHOUT THE WRITTEN PERMISSION OF KEKO PUMP AND EQUIPMENT IS PROHIBITED.

UNLESS OTHERWISE SPECIFIED:


DIMENSIONS ARE IN INCHES
 TOLERANCES:
 FRACTIONAL $\pm 1/32$
 ONE PLACE DECIMAL $\pm .1$
 TWO PLACE DECIMAL $\pm .03$
 THREE PLACE DECIMAL $\pm .020$
 ANGULAR $\pm .5^\circ$

MATERIAL

DRAWN	AWS	
	PREVIOUS	CURRENT
REVISION #	1.0	1.0

DATE: 5/5/2015

COMMENTS:



KECO PUMP AND EQUIPMENT
 WWW.PUMPAHEAD.COM

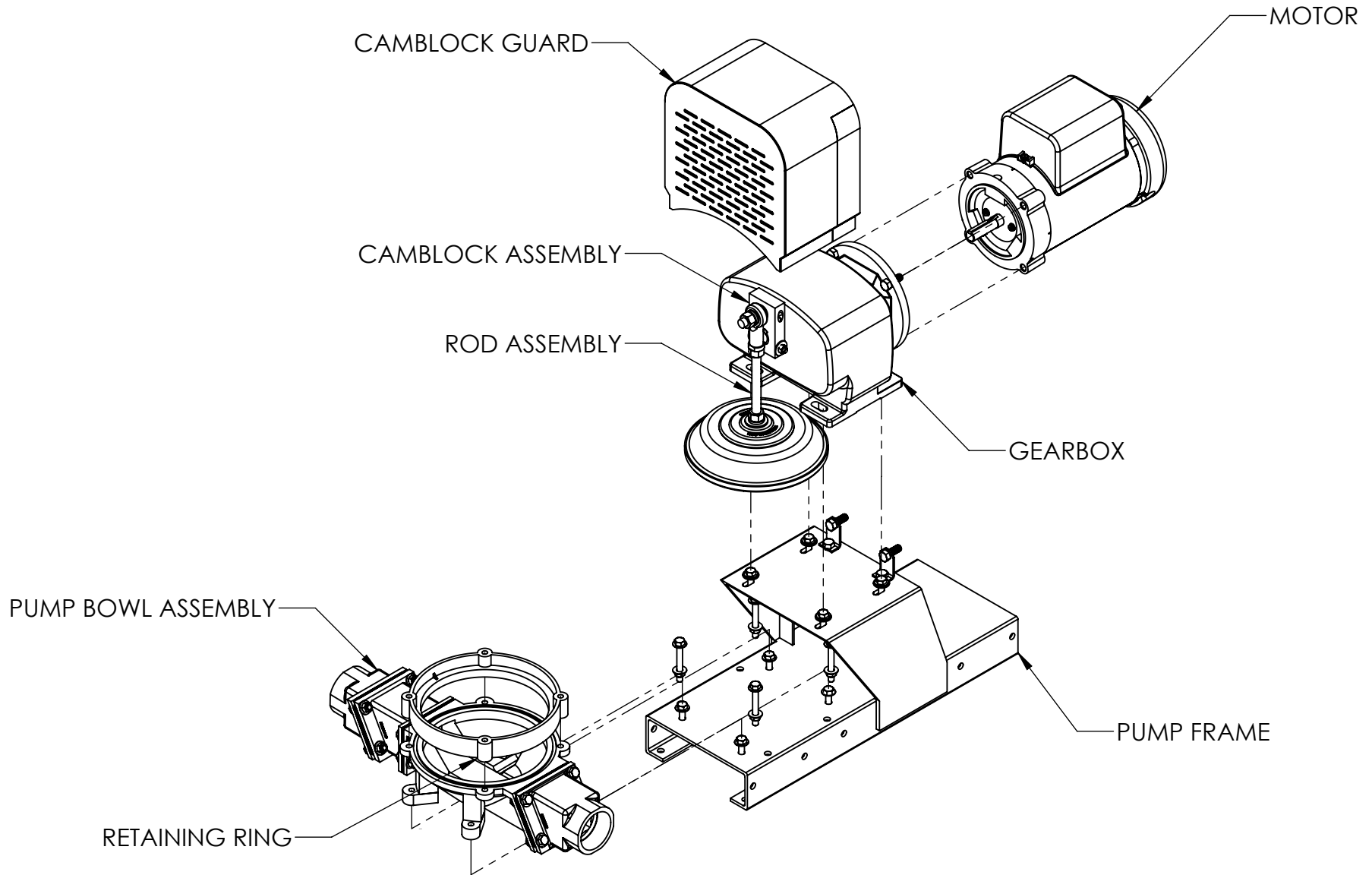
PART NUMBER - TITLE

PUMP BOWL ORIENTATIONS

DIMENSION: INCHES / (XX) MM

SCALE: 1:10

SHEET 2 OF 5



NOTES:
 MAIN COMPONENTS EXPLODED
 VIEW

PROPRIETARY AND CONFIDENTIAL
 THE INFORMATION CONTAINED
 IN THIS DRAWING IS THE SOLE
 PROPERTY OF KECO PUMP AND
 EQUIPMENT. ANY
 REPRODUCTION IN PART OR AS
 A WHOLE WITHOUT THE
 WRITTEN PERMISSION OF
 KECO PUMP AND EQUIPMENT IS
 PROHIBITED.

UNLESS OTHERWISE SPECIFIED:
 DIMENSIONS ARE IN INCHES
 TOLERANCES:
 FRACTIONAL $\pm 1/32$
 ONE PLACE DECIMAL $\pm .1$
 TWO PLACE DECIMAL $\pm .03$
 THREE PLACE DECIMAL $\pm .020$
 ANGULAR $\pm .5^\circ$
 MATERIAL

DRAWN	AWS	
REVISION #	PREVIOUS	CURRENT
	1.0	1.0

DATE: 5/5/2015

COMMENTS:

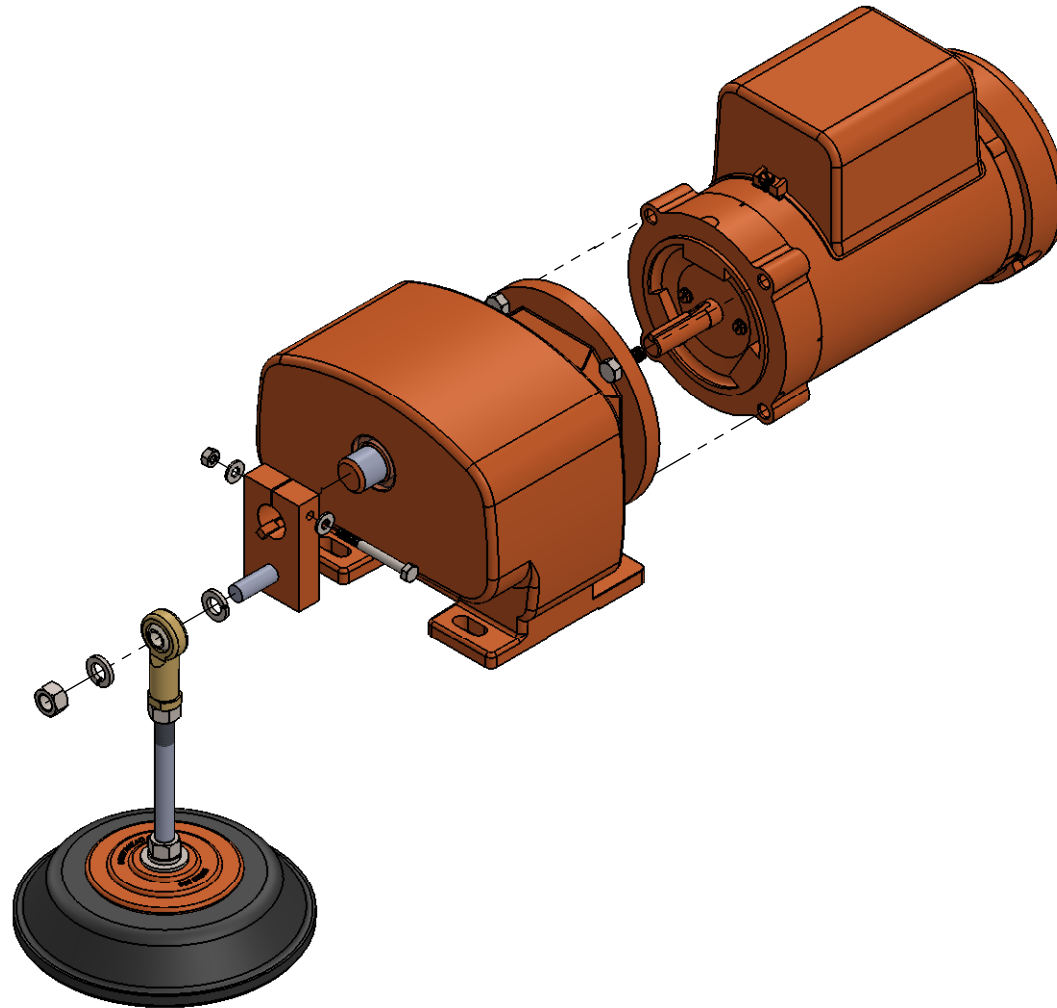
KECO KECO PUMP AND EQUIPMENT
 WWW.PUMPAHEAD.COM

PART NUMBER - TITLE

50 E SERIES SINGLE DIAPHRAGM

DIMENSION: INCHES / (XX) MM

SCALE: 1:8 SHEET 3 OF 5



NOTES:
 DIAPHRAGM ROD-CAMBLOCK
 -GEARBOX-MOTOR EXPLODED
 VIEW

PROPRIETARY AND CONFIDENTIAL

THE INFORMATION CONTAINED
 IN THIS DRAWING IS THE SOLE
 PROPERTY OF KECO PUMP AND
 EQUIPMENT. ANY
 REPRODUCTION IN PART OR AS
 A WHOLE WITHOUT THE
 WRITTEN PERMISSION OF
 KECO PUMP AND EQUIPMENT IS
 PROHIBITED.

UNLESS OTHERWISE SPECIFIED:

DIMENSIONS ARE IN INCHES
 TOLERANCES:
 FRACTIONAL $\pm 1/32$
 ONE PLACE DECIMAL $\pm .1$
 TWO PLACE DECIMAL $\pm .03$
 THREE PLACE DECIMAL $\pm .020$
 ANGULAR $\pm .5^\circ$

MATERIAL

DRAWN	AWS	
REVISION #	PREVIOUS	CURRENT
	1.0	1.0

DATE: 5/5/2015

COMMENTS:

KECO KECO PUMP AND EQUIPMENT
 WWW.PUMPAHEAD.COM

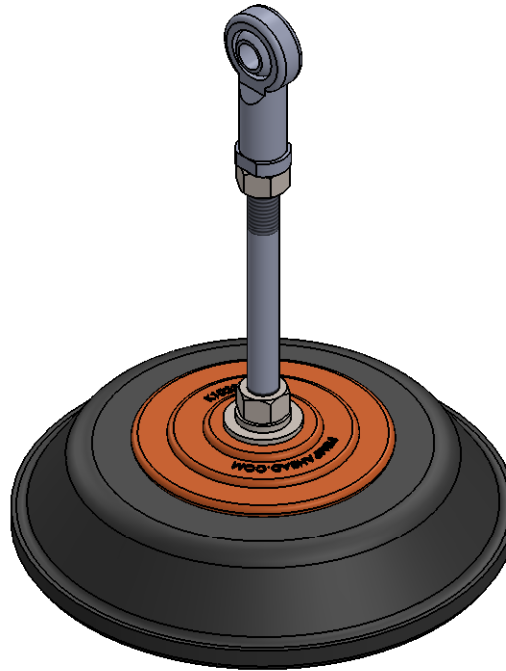
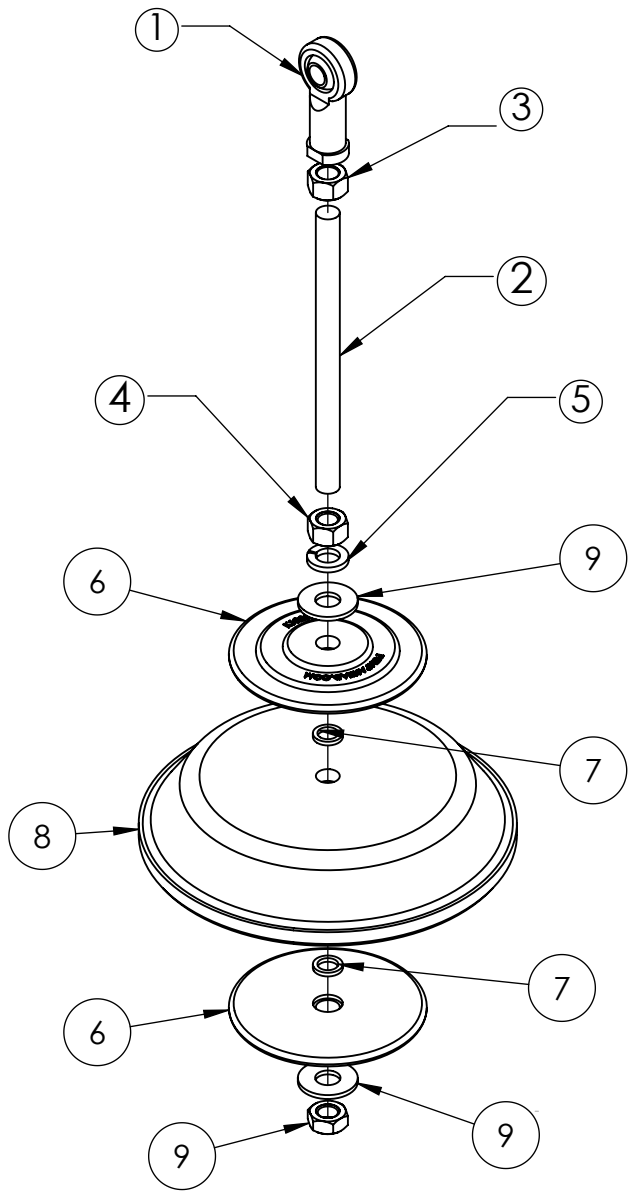
PART NUMBER - TITLE

50 E SERIES SINGLE DIAPHRAGM

DIMENSION: INCHES / (XX) MM

SCALE: 1:5

SHEET 4 OF 5



BOM Table		
ITEM NO.	PART NUMBER - DESCRIPTION	QTY.
1	B6029.500 - ROD END BEARING	1
2	B6070.500 - S/S CONNECTING ROD	1
3	B2021.500 - Hex Nut 0.5-20	1
4	B2013.500 - Hex Nut 0.5-13	1
5	B3028.500 - Lock Washer	1
6	K1023.000 - ALUMINUM REINFORCING PLATE	2
7	V1040.003 - O RING	2
8	V0022.XXX - DIAPHRAM*	1
9	B2022.500 - HEX NUT 0.5-20	1

NOTES:

Available Diaphragms*

- V0022.000 - Neoprene
- V0022.HYP - Hypalon
- V0022.NIT - Nitrile (Buna-N)

PROPRIETARY AND CONFIDENTIAL

THE INFORMATION CONTAINED IN THIS DRAWING IS THE SOLE PROPERTY OF KEKO PUMP AND EQUIPMENT. ANY REPRODUCTION IN PART OR AS A WHOLE WITHOUT THE WRITTEN PERMISSION OF KEKO PUMP AND EQUIPMENT IS PROHIBITED.

UNLESS OTHERWISE SPECIFIED:

DIMENSIONS ARE IN INCHES
 TOLERANCES:
 FRACTIONAL $\pm 1/32$
 ONE PLACE DECIMAL $\pm .1$
 TWO PLACE DECIMAL $\pm .03$
 THREE PLACE DECIMAL $\pm .020$
 ANGULAR $\pm .5^\circ$

MATERIAL

DRAWN	AWS	
	PREVIOUS	CURRENT
REVISION #	1.0	1.0

DATE: 5/5/2015

COMMENTS:

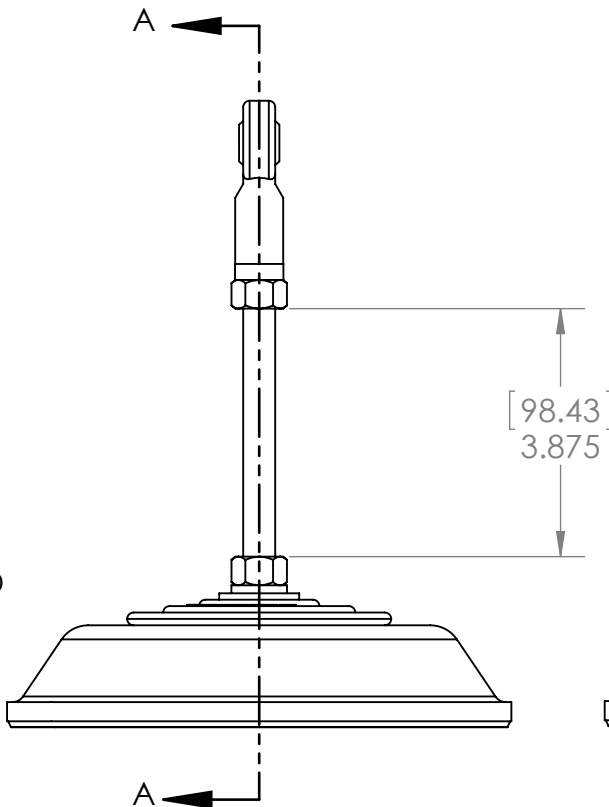
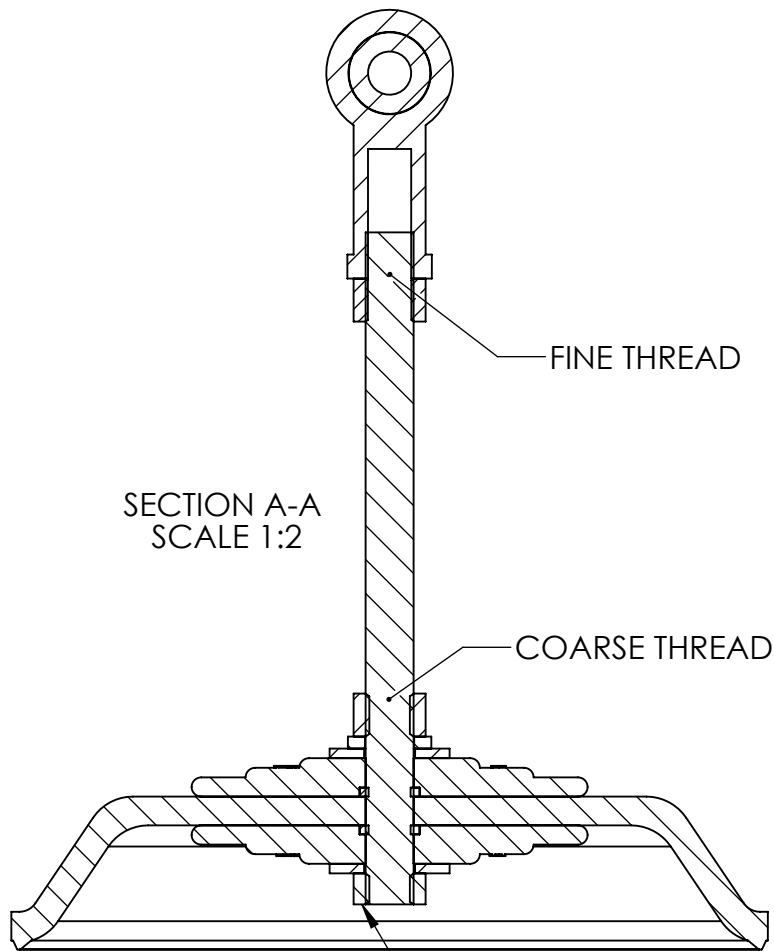
KEKO KEKO PUMP AND EQUIPMENT
 WWW.PUMPAHEAD.COM

PART NUMBER - TITLE
**DIAPHRAGM ROD ASSEMBLY
 EXPLODED VIEW**

DIMENSION: INCHES / (XX) MM

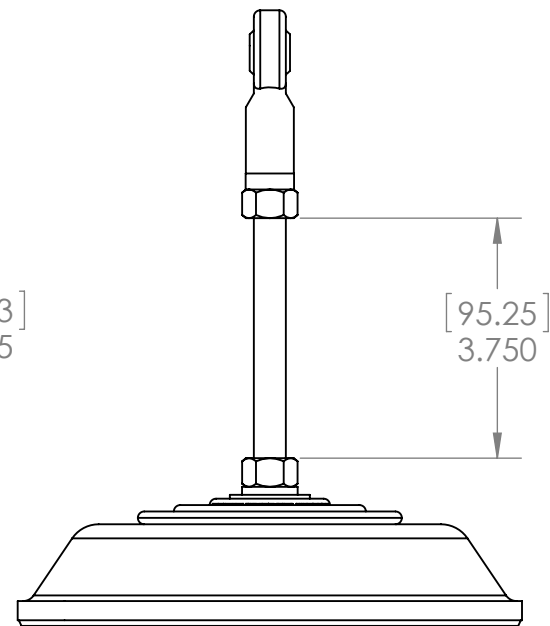
SCALE: 1:4

SHEET 1 OF 2



SINGLE DIAPHRAGM PUMP

* Excludes "Pumpmate" 90 Series.



DOUBLE DIAPHRAGM PUMP

B2022.500 (Half Nut w/ Nylon Insert) must be flush with bottom of connecting rod.

NOTES:

CRITICAL DIMENSION
 SINGLE DIAPHRAGM PUMP 3.875"
 DOUBLE DIAPHRAGM PUMP 3.75"

PROPRIETARY AND CONFIDENTIAL

THE INFORMATION CONTAINED IN THIS DRAWING IS THE SOLE PROPERTY OF KECO PUMP AND EQUIPMENT. ANY REPRODUCTION IN PART OR AS A WHOLE WITHOUT THE WRITTEN PERMISSION OF KECO PUMP AND EQUIPMENT IS PROHIBITED.

UNLESS OTHERWISE SPECIFIED:


DIMENSIONS ARE IN INCHES
 TOLERANCES:
 FRACTIONAL $\pm 1/32$
 ONE PLACE DECIMAL $\pm .1$
 TWO PLACE DECIMAL $\pm .03$
 THREE PLACE DECIMAL $\pm .020$
 ANGULAR $\pm .5^\circ$

MATERIAL

DRAWN	AWS	
REVISION #	PREVIOUS	CURRENT
	1.0	1.0

DATE: 5/5/2015

COMMENTS:



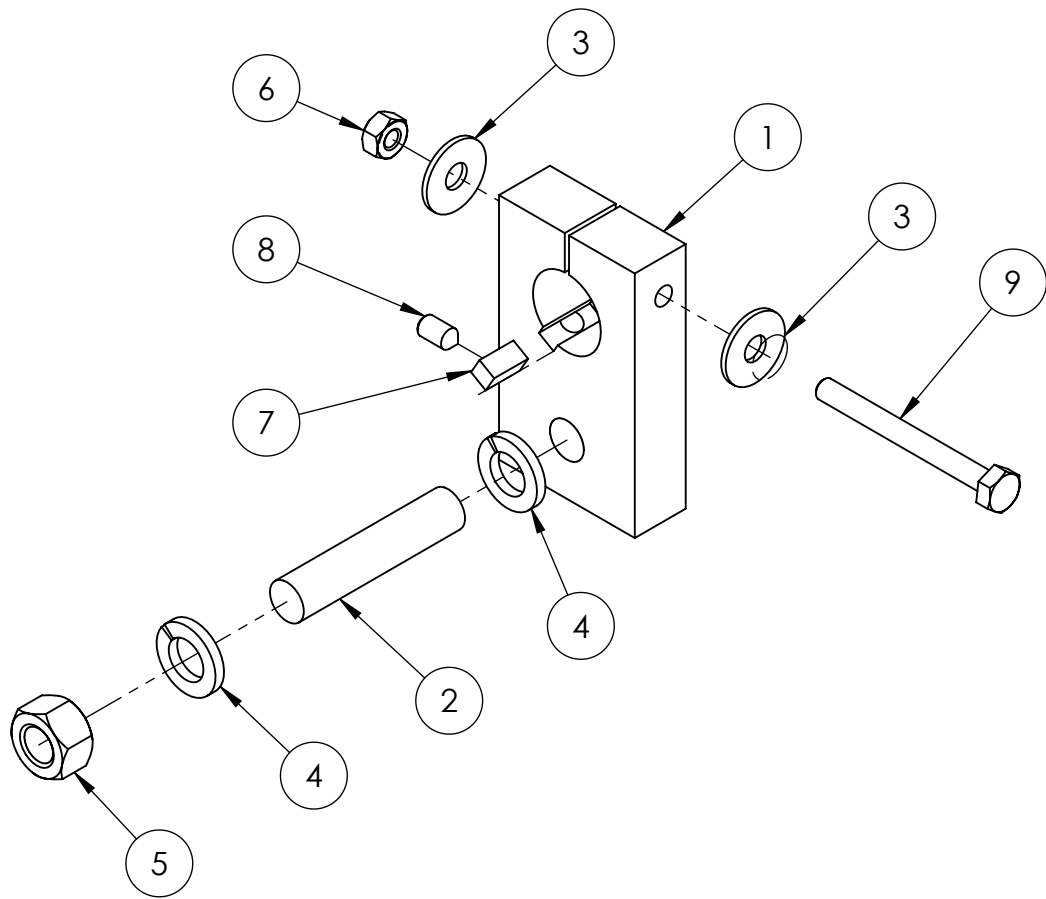
KECO PUMP AND EQUIPMENT
 WWW.PUMPAHEAD.COM

PART NUMBER - TITLE
DIAPHRAGM ROD ASSEMBLY
CRITICAL DIMENSIONS

DIMENSION: INCHES / (XX) MM

SCALE: A

SHEET 2 OF 2



ITEM NO.	PART NUMBER - DESCRIPTION	QTY.
1	D3031.000 - CAMBLOCK	1
2	B6025.500 - STUD FOR CAM BLOCK	1
3	B3014.025 - FLATWASHER .25" X .625" SS	2
4	B3028.500 - LOCK WASHER .5" SS	2
5	B2020.500 - LOCKNUT W/ NYL INSERT .5-13	1
6	B2020.025 - LOCKNUT W/NYL INST .25-20	1
7	D2001.XXX - CAM BLOCK KEY	1
8	B4003.250 - SET SCREW SHARP TIP .25 X 20 X .5	1
9	B1025.250 - HBOLT 0.2500-20x2.5x0.75-N	1

NOTES:
CAMBLOCK ASSEMBLY
SINGLE DIAPHRAGM PUMPS
 May Not Fit Legacy Gearbox

PROPRIETARY AND CONFIDENTIAL
 THE INFORMATION CONTAINED IN THIS DRAWING IS THE SOLE PROPERTY OF KEKO PUMP AND EQUIPMENT. ANY REPRODUCTION IN PART OR AS A WHOLE WITHOUT THE WRITTEN PERMISSION OF KEKO PUMP AND EQUIPMENT IS PROHIBITED.

UNLESS OTHERWISE SPECIFIED:
 DIMENSIONS ARE IN INCHES
 TOLERANCES:
 FRACTIONAL ± 1/32
 ONE PLACE DECIMAL ± .1
 TWO PLACE DECIMAL ± .03
 THREE PLACE DECIMAL ± .020
 ANGULAR ± .5°
 MATERIAL

DRAWN	AWS	
REVISION #	PREVIOUS	CURRENT
	1.0	1.0
DATE: 5/5/2015		
COMMENTS:		

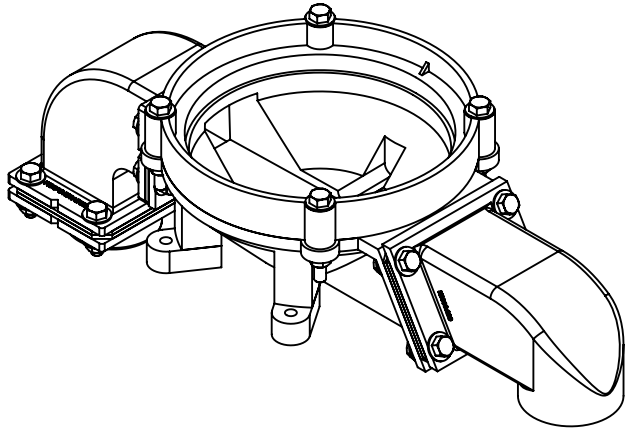
KEKO KEKO PUMP AND EQUIPMENT
 WWW.PUMPAHEAD.COM

PART NUMBER - TITLE
D3031.000 CAMBLOCK ASSEMBLY

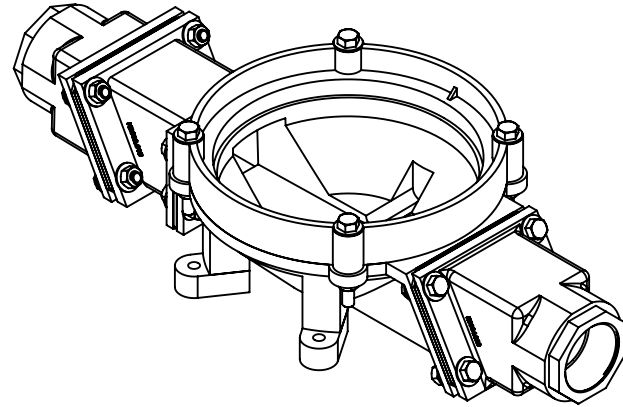
DIMENSION: INCHES / (XX) MM

SCALE: 1:2

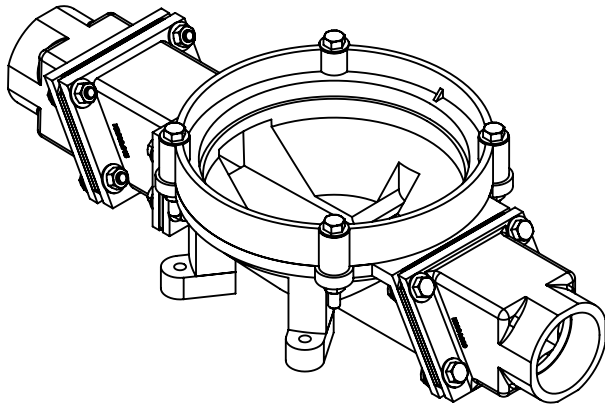
SHEET 5 OF 5



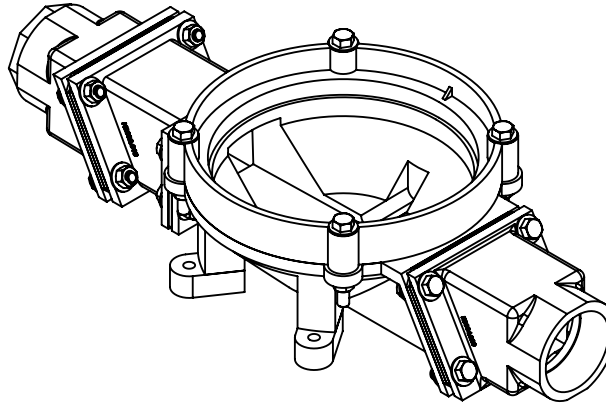
ABOWL #1
90° X 90° (1.5" X 2.0")



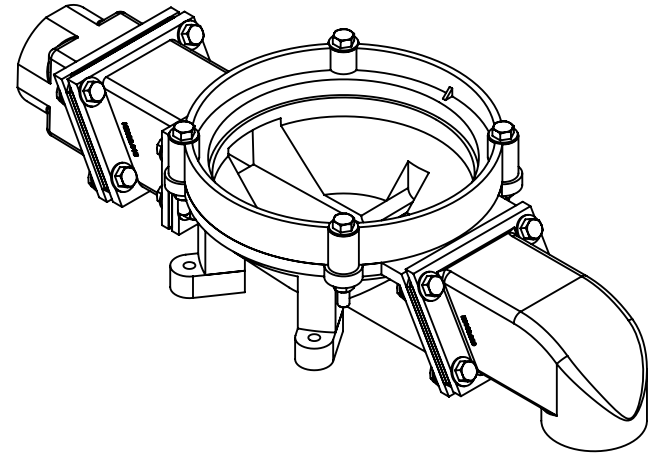
ABOWL #2
STRAIGHT (1.5" X 1.5")



ABOWL #3
STRAIGHT (1.5" X 2.0")



ABOWL #4
STRAIGHT (2.0" X 2.0")



ABOWL #5
STRAIGHT X 90° (2.0" X 2.0")

NOTES:

PROPRIETARY AND CONFIDENTIAL

THE INFORMATION CONTAINED IN THIS DRAWING IS THE SOLE PROPERTY OF KEKO PUMP AND EQUIPMENT. ANY REPRODUCTION IN PART OR AS A WHOLE WITHOUT THE WRITTEN PERMISSION OF KEKO PUMP AND EQUIPMENT IS PROHIBITED.

UNLESS OTHERWISE SPECIFIED:

DIMENSIONS ARE IN INCHES
TOLERANCES:
FRACTIONAL ± 1/32
ONE PLACE DECIMAL ± .1
TWO PLACE DECIMAL ± .03
THREE PLACE DECIMAL ± .020
ANGULAR ± .5°

MATERIAL

DRAWN	AWS	
REVISION #	PREVIOUS	CURRENT
	1.0	1.0

DATE: 6/23/2015

COMMENTS:

KEKO KEKO PUMP AND EQUIPMENT
WWW.PUMPAHEAD.COM

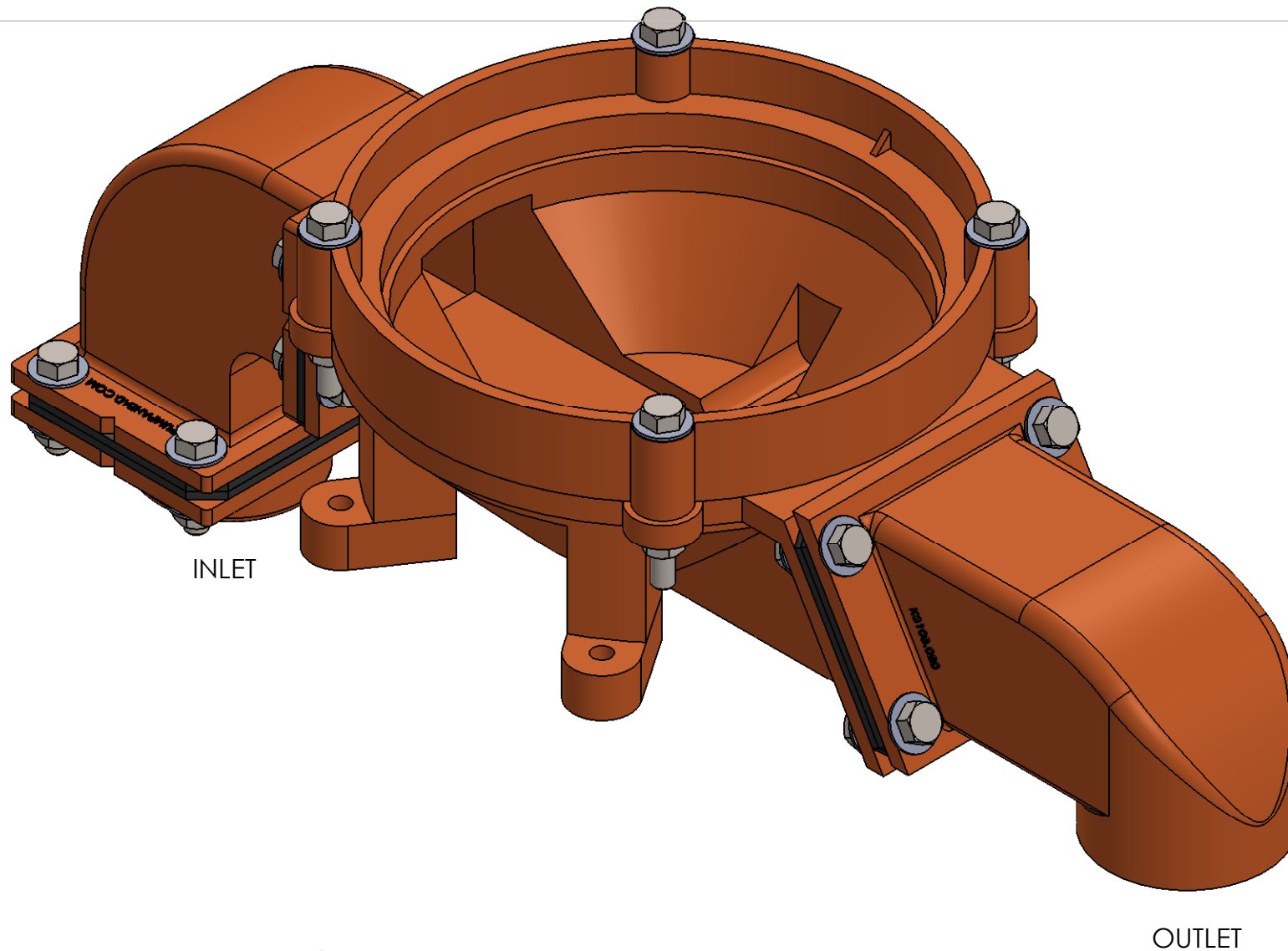
PART NUMBER - TITLE

ABOWL PUMP ORIENTATIONS

DIMENSION: INCHES / (XX) MM

SCALE: A

SHEET 1 OF 13



INLET

OUTLET

NOTES:
90° X 90° (1.5" X 2.0")

PROPRIETARY AND CONFIDENTIAL

THE INFORMATION CONTAINED IN THIS DRAWING IS THE SOLE PROPERTY OF KEKO PUMP AND EQUIPMENT. ANY REPRODUCTION IN PART OR AS A WHOLE WITHOUT THE WRITTEN PERMISSION OF KEKO PUMP AND EQUIPMENT IS PROHIBITED.

UNLESS OTHERWISE SPECIFIED:

DIMENSIONS ARE IN INCHES
TOLERANCES:
FRACTIONAL ± 1/32
ONE PLACE DECIMAL ± .1
TWO PLACE DECIMAL ± .03
THREE PLACE DECIMAL ± .020
ANGULAR ± .5°

MATERIAL

DRAWN	AWS	
REVISION #	PREVIOUS	CURRENT
	1.0	1.0

DATE: 6/23/2015

COMMENTS:

KEKO PUMP AND EQUIPMENT
WWW.PUMPAHEAD.COM

PART NUMBER - TITLE

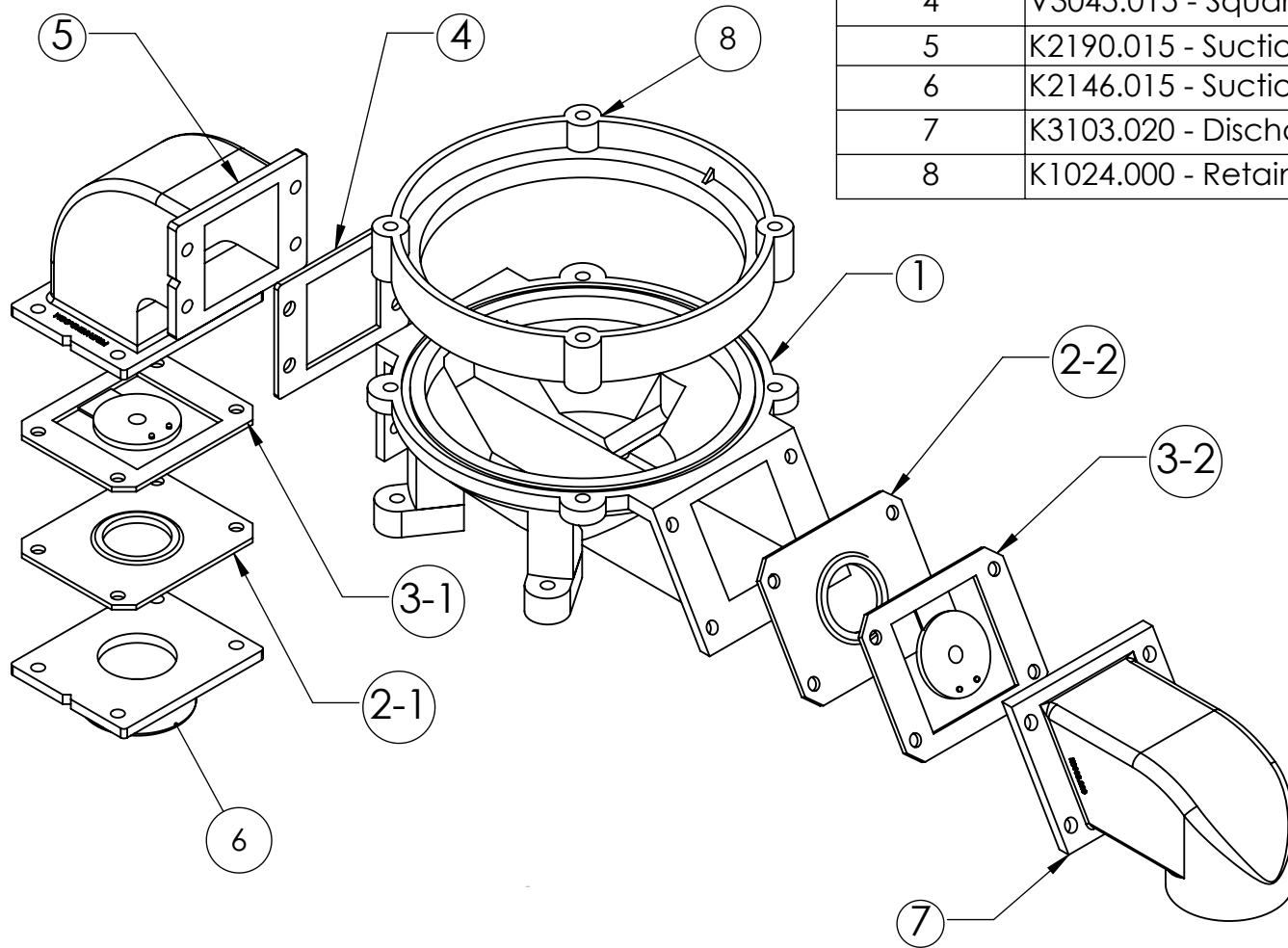
ABOWL #1

DIMENSION: INCHES / (XX) MM

SCALE: 1:2

SHEET 2 OF 13

ITEM NO.	PART NUMBER - DESCRIPTION	QTY.
1	K1021.000 - Pump Bowl	1
2	V2043.015 - Valve Seating Plate	2
3	V0041.015 - Valve	2
4	V3045.015 - Square Center Gasket	1
5	K2190.015 - Suction Elbow	1
6	K2146.015 - Suction Hose Adapter (Female)	1
7	K3103.020 - Discharge Elbow	1
8	K1024.000 - Retaining Ring	1



NOTES:
STAINLESS STEEL FASTENERS NOT DEPICTED

(3) P/N B-FLANGE HARDWARE
Stainless Steel Fasteners/Hardware Kit,
Includes 4 Bolts, 8 Washers, 4 Nylon Lock Nut

(1) B-RING 2 BOWL
Retaining Ring to Bowl Fasteners/Hardware Kit,
Includes 4 Bolts, 8 Washers, 4 Nylon Lock Nut

PROPRIETARY AND CONFIDENTIAL

THE INFORMATION CONTAINED
IN THIS DRAWING IS THE SOLE
PROPERTY OF KEKO PUMP AND
EQUIPMENT. ANY
REPRODUCTION IN PART OR AS
A WHOLE WITHOUT THE
WRITTEN PERMISSION OF
KEKO PUMP AND EQUIPMENT IS
PROHIBITED.

UNLESS OTHERWISE SPECIFIED:

DIMENSIONS ARE IN INCHES
TOLERANCES:
FRACTIONAL $\pm 1/32$
ONE PLACE DECIMAL $\pm .1$
TWO PLACE DECIMAL $\pm .03$
THREE PLACE DECIMAL $\pm .020$
ANGULAR $\pm .5^\circ$

MATERIAL

DRAWN	AWS	
REVISION #	PREVIOUS	CURRENT
	1.0	1.0

DATE: 6/23/2015

COMMENTS:

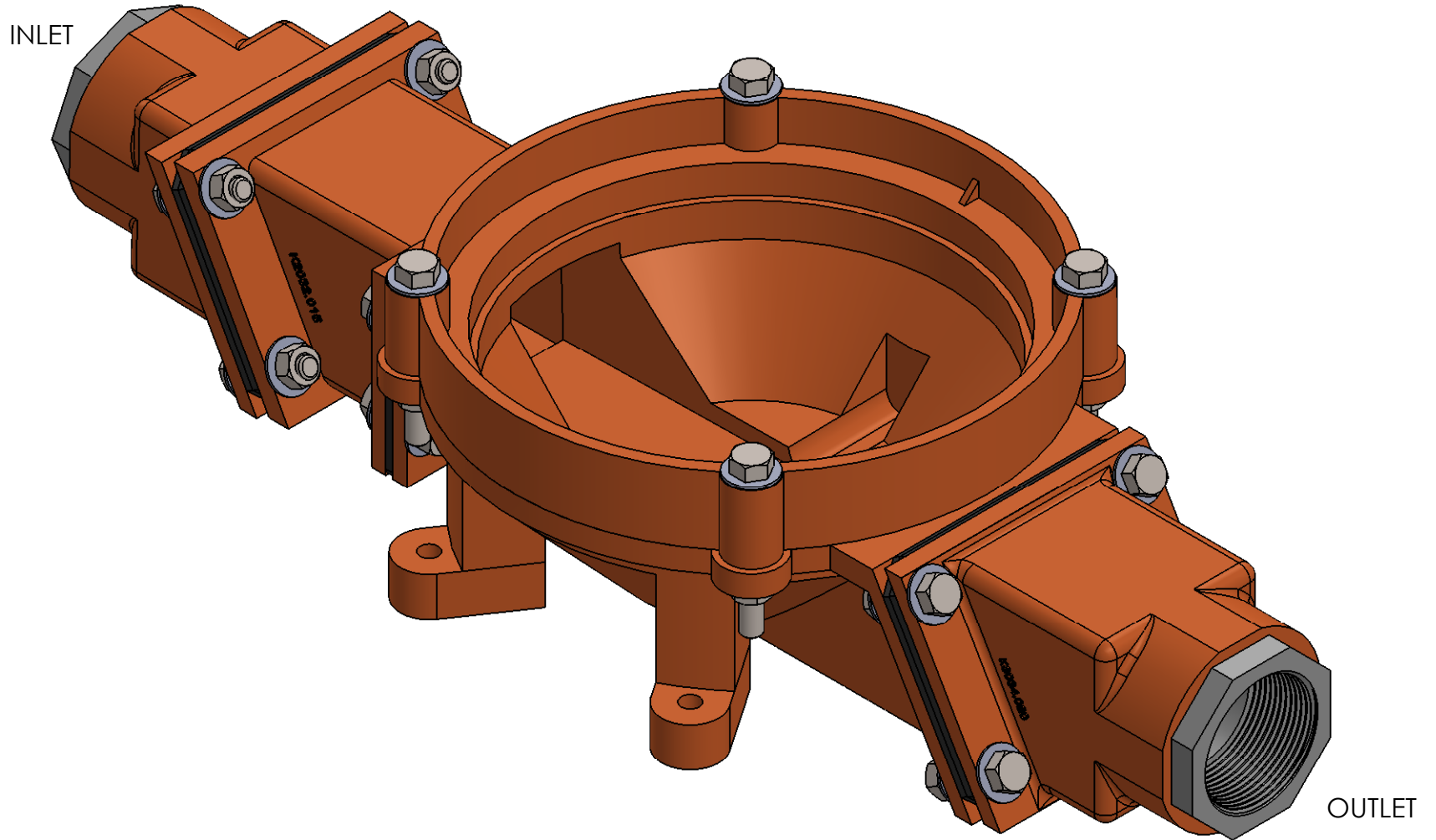
KEKO KEKO PUMP AND EQUIPMENT
WWW.PUMPAHEAD.COM

PART NUMBER - TITLE

ABOWL #1 EXPLODED VIEW

DIMENSION: INCHES / (XX) MM

SCALE: 1:4 SHEET 3 OF 13



NOTES:
STRAIGHT (1.5" X 1.5")

PROPRIETARY AND CONFIDENTIAL

THE INFORMATION CONTAINED IN THIS DRAWING IS THE SOLE PROPERTY OF KECO PUMP AND EQUIPMENT. ANY REPRODUCTION IN PART OR AS A WHOLE WITHOUT THE WRITTEN PERMISSION OF KECO PUMP AND EQUIPMENT IS PROHIBITED.

UNLESS OTHERWISE SPECIFIED:

DIMENSIONS ARE IN INCHES
TOLERANCES:
FRACTIONAL $\pm 1/32$
ONE PLACE DECIMAL $\pm .1$
TWO PLACE DECIMAL $\pm .03$
THREE PLACE DECIMAL $\pm .020$
ANGULAR $\pm .5^\circ$

MATERIAL

DRAWN	AWS	
REVISION #	PREVIOUS	CURRENT
	1.0	1.0

DATE: 6/23/2015

COMMENTS:

KECO PUMP AND EQUIPMENT
WWW.PUMPAHEAD.COM

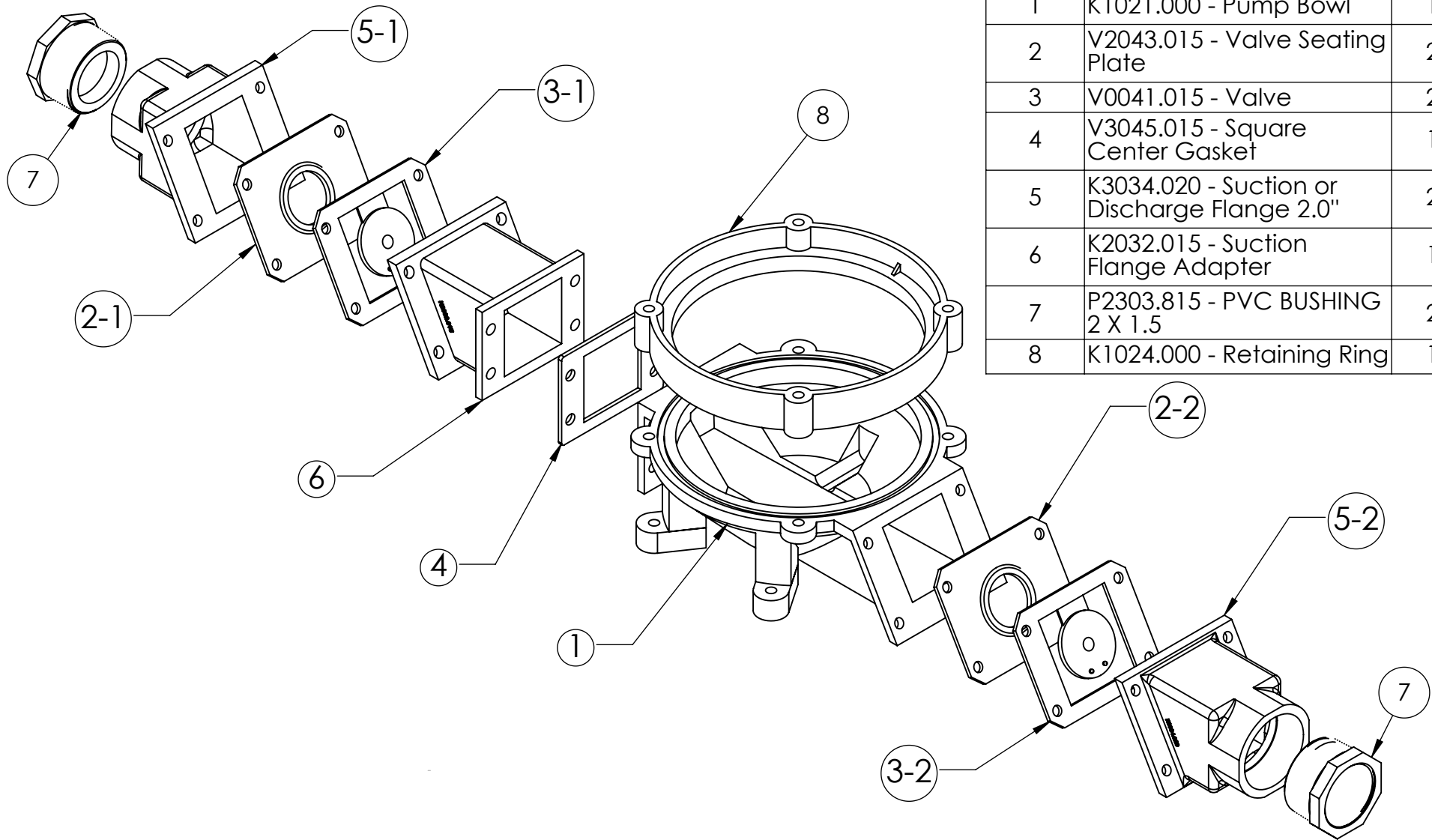
PART NUMBER - TITLE

ABOWL #2 ASSEMBLY

DIMENSION: INCHES / (XX) MM

SCALE: 1:2

SHEET 4 OF 13



ITEM NO.	PART NUMBER - DESCRIPTION	QTY.
1	K1021.000 - Pump Bowl	1
2	V2043.015 - Valve Seating Plate	2
3	V0041.015 - Valve	2
4	V3045.015 - Square Center Gasket	1
5	K3034.020 - Suction or Discharge Flange 2.0"	2
6	K2032.015 - Suction Flange Adapter	1
7	P2303.815 - PVC BUSHING 2 X 1.5	2
8	K1024.000 - Retaining Ring	1

NOTES:
STAINLESS STEEL FASTENERS NOT DEPICTED

(3) P/N B-FLANGE HARDWARE
Stainless Steel Fasteners/Hardware Kit,
Includes 4 Bolts, 8 Washers, 4 Nylon Lock Nut

(1) B-RING 2 BOWL
Retaining Ring to Bowl Fasteners/Hardware Kit,
Includes 4 Bolts, 8 Washers, 4 Nylon Lock Nut

PROPRIETARY AND CONFIDENTIAL

THE INFORMATION CONTAINED
IN THIS DRAWING IS THE SOLE
PROPERTY OF KEKO PUMP AND
EQUIPMENT. ANY
REPRODUCTION IN PART OR AS
A WHOLE WITHOUT THE
WRITTEN PERMISSION OF
KEKO PUMP AND EQUIPMENT IS
PROHIBITED.

UNLESS OTHERWISE SPECIFIED:

DIMENSIONS ARE IN INCHES
TOLERANCES:
FRACTIONAL $\pm 1/32$
ONE PLACE DECIMAL $\pm .1$
TWO PLACE DECIMAL $\pm .03$
THREE PLACE DECIMAL $\pm .020$
ANGULAR $\pm .5^\circ$

MATERIAL

DRAWN	AWS	
	PREVIOUS	CURRENT
REVISION #	1.0	1.0

DATE: 6/23/2015

COMMENTS:

KEKO KEKO PUMP AND EQUIPMENT
WWW.PUMPAHEAD.COM

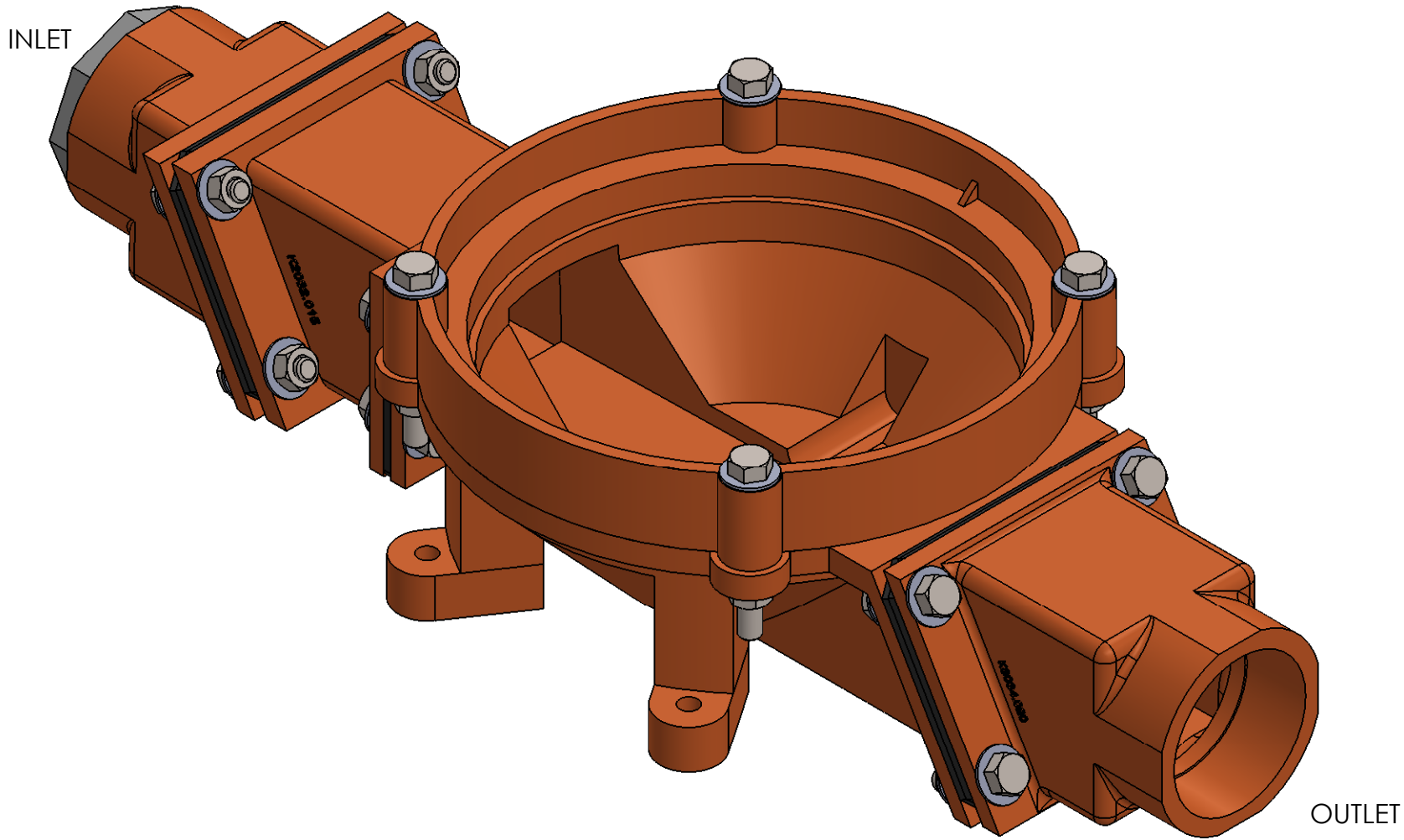
PART NUMBER - TITLE

ABOWL #2 EXPLODED VIEW

DIMENSION: INCHES / (XX) MM

SCALE: 1:4

SHEET 5 OF 13



NOTES:
STRAIGHT (1.5" X 2.0")

PROPRIETARY AND CONFIDENTIAL
THE INFORMATION CONTAINED IN THIS DRAWING IS THE SOLE PROPERTY OF KEKO PUMP AND EQUIPMENT. ANY REPRODUCTION IN PART OR AS A WHOLE WITHOUT THE WRITTEN PERMISSION OF KEKO PUMP AND EQUIPMENT IS PROHIBITED.

UNLESS OTHERWISE SPECIFIED:
DIMENSIONS ARE IN INCHES
TOLERANCES:
FRACTIONAL $\pm 1/32$
ONE PLACE DECIMAL $\pm .1$
TWO PLACE DECIMAL $\pm .03$
THREE PLACE DECIMAL $\pm .020$
ANGULAR $\pm .5^\circ$

MATERIAL

DRAWN	AWS	
REVISION #	PREVIOUS	CURRENT
	1.0	1.0

DATE: 6/23/2015

COMMENTS:

KEKO PUMP AND EQUIPMENT
WWW.PUMPAHEAD.COM

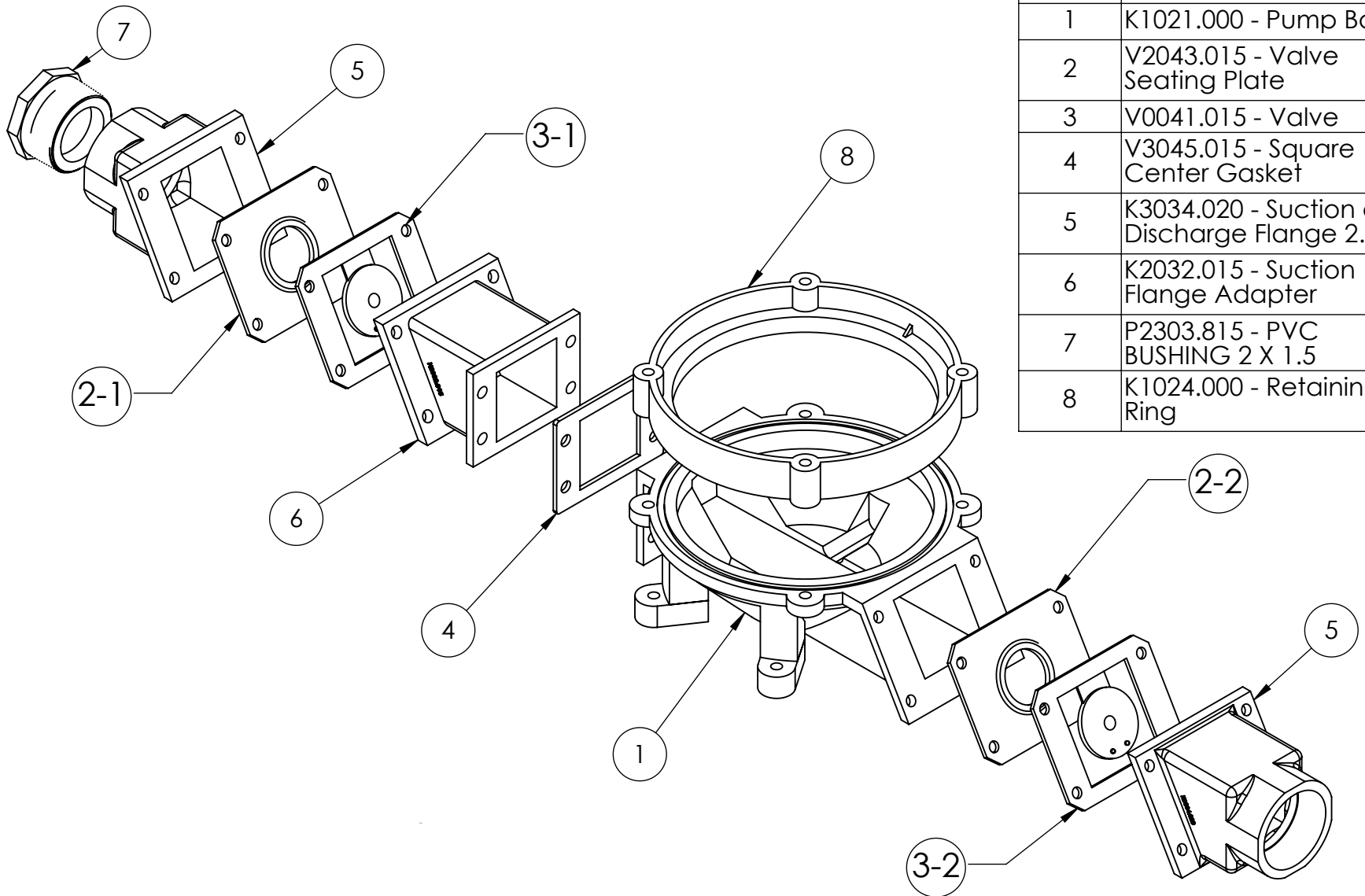
PART NUMBER - TITLE

ABOWL #3 ASSEMBLY

DIMENSION: INCHES / (XX) MM

SCALE: 1:2

SHEET 6 OF 13



ITEM NO.	PART NUMBER - DESCRIPTION	QTY.
1	K1021.000 - Pump Bowl	1
2	V2043.015 - Valve Seating Plate	2
3	V0041.015 - Valve	2
4	V3045.015 - Square Center Gasket	1
5	K3034.020 - Suction or Discharge Flange 2.0"	2
6	K2032.015 - Suction Flange Adapter	1
7	P2303.815 - PVC BUSHING 2 X 1.5	1
8	K1024.000 - Retaining Ring	1

NOTES:
 STAINLESS STEEL FASTENERS NOT DEPICTED

(3) P/N B-FLANGE HARDWARE
 Stainless Steel Fasteners/Hardware Kit,
 Includes 4 Bolts, 8 Washers, 4 Nylon Lock Nut

(1) B-RING 2 BOWL
 Retaining Ring to Bowl Fasteners/Hardware Kit,
 Includes 4 Bolts, 8 Washers, 4 Nylon Lock Nut

PROPRIETARY AND CONFIDENTIAL

THE INFORMATION CONTAINED IN THIS DRAWING IS THE SOLE PROPERTY OF KEKO PUMP AND EQUIPMENT. ANY REPRODUCTION IN PART OR AS A WHOLE WITHOUT THE WRITTEN PERMISSION OF KEKO PUMP AND EQUIPMENT IS PROHIBITED.

UNLESS OTHERWISE SPECIFIED:
 DIMENSIONS ARE IN INCHES
 TOLERANCES:
 FRACTIONAL $\pm 1/32$
 ONE PLACE DECIMAL $\pm .1$
 TWO PLACE DECIMAL $\pm .03$
 THREE PLACE DECIMAL $\pm .020$
 ANGULAR $\pm .5^\circ$

MATERIAL

DRAWN	AWS	
REVISION #	PREVIOUS	CURRENT
DATE: 6/23/2015	1.0	1.0
COMMENTS:		

KEKO KEKO PUMP AND EQUIPMENT
 WWW.PUMPAHEAD.COM

PART NUMBER - TITLE

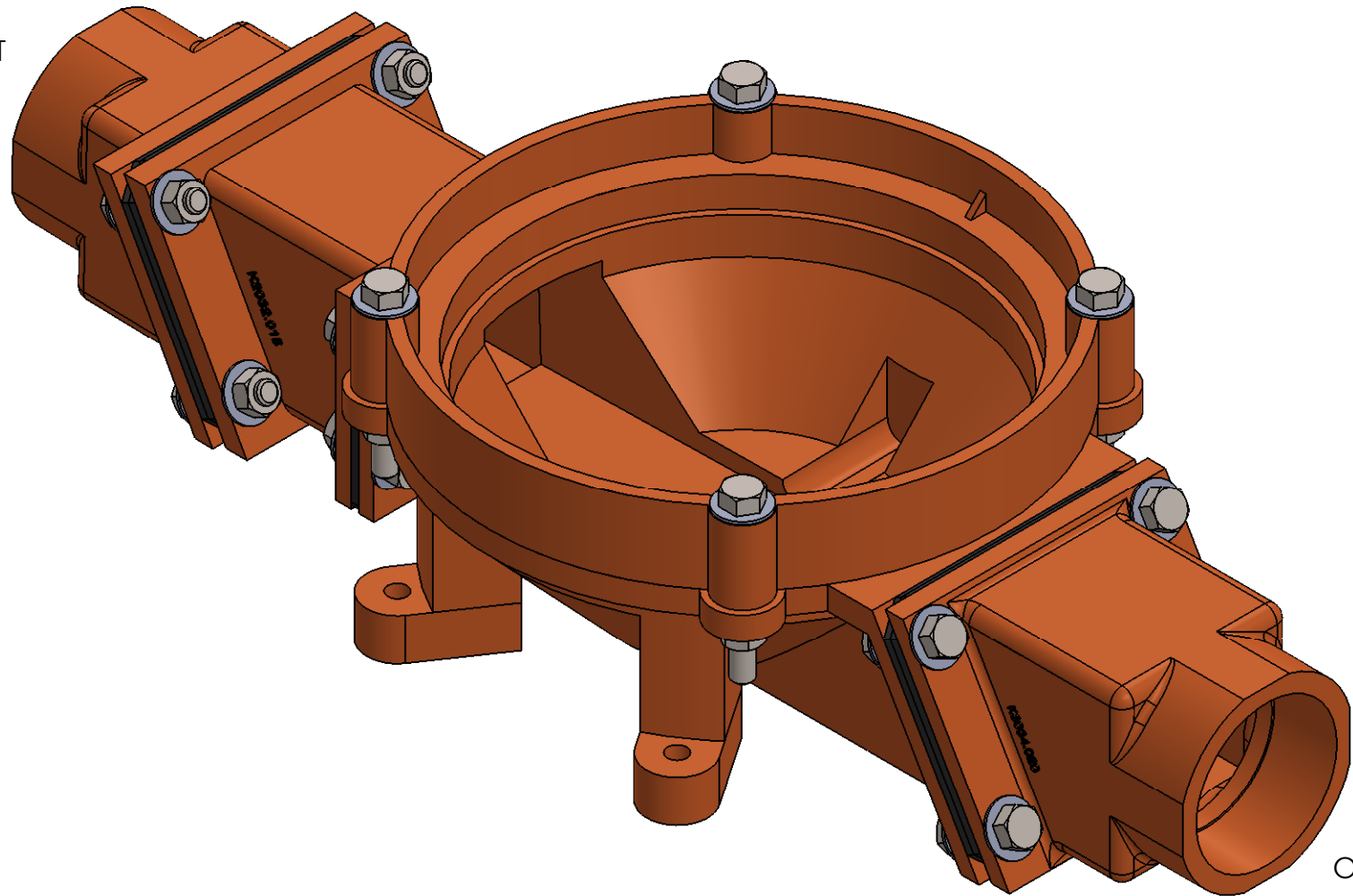
ABOWL #3 EXPLODED VIEW

DIMENSION: INCHES / (XX) MM

SCALE: 1:4

SHEET 7 OF 13

INLET



OUTLET

NOTES:
STRAIGHT (2.0" X 2.0")

PROPRIETARY AND CONFIDENTIAL

THE INFORMATION CONTAINED IN THIS DRAWING IS THE SOLE PROPERTY OF KECO PUMP AND EQUIPMENT. ANY REPRODUCTION IN PART OR AS A WHOLE WITHOUT THE WRITTEN PERMISSION OF KECO PUMP AND EQUIPMENT IS PROHIBITED.

UNLESS OTHERWISE SPECIFIED:

DIMENSIONS ARE IN INCHES
TOLERANCES:
FRACTIONAL $\pm 1/32$
ONE PLACE DECIMAL $\pm .1$
TWO PLACE DECIMAL $\pm .03$
THREE PLACE DECIMAL $\pm .020$
ANGULAR $\pm .5^\circ$

MATERIAL

DRAWN	AWS	
	PREVIOUS	CURRENT
REVISION #	1.0	1.0

DATE: 6/23/2015

COMMENTS:

KECO PUMP AND EQUIPMENT
WWW.PUMPAHEAD.COM

PART NUMBER - TITLE

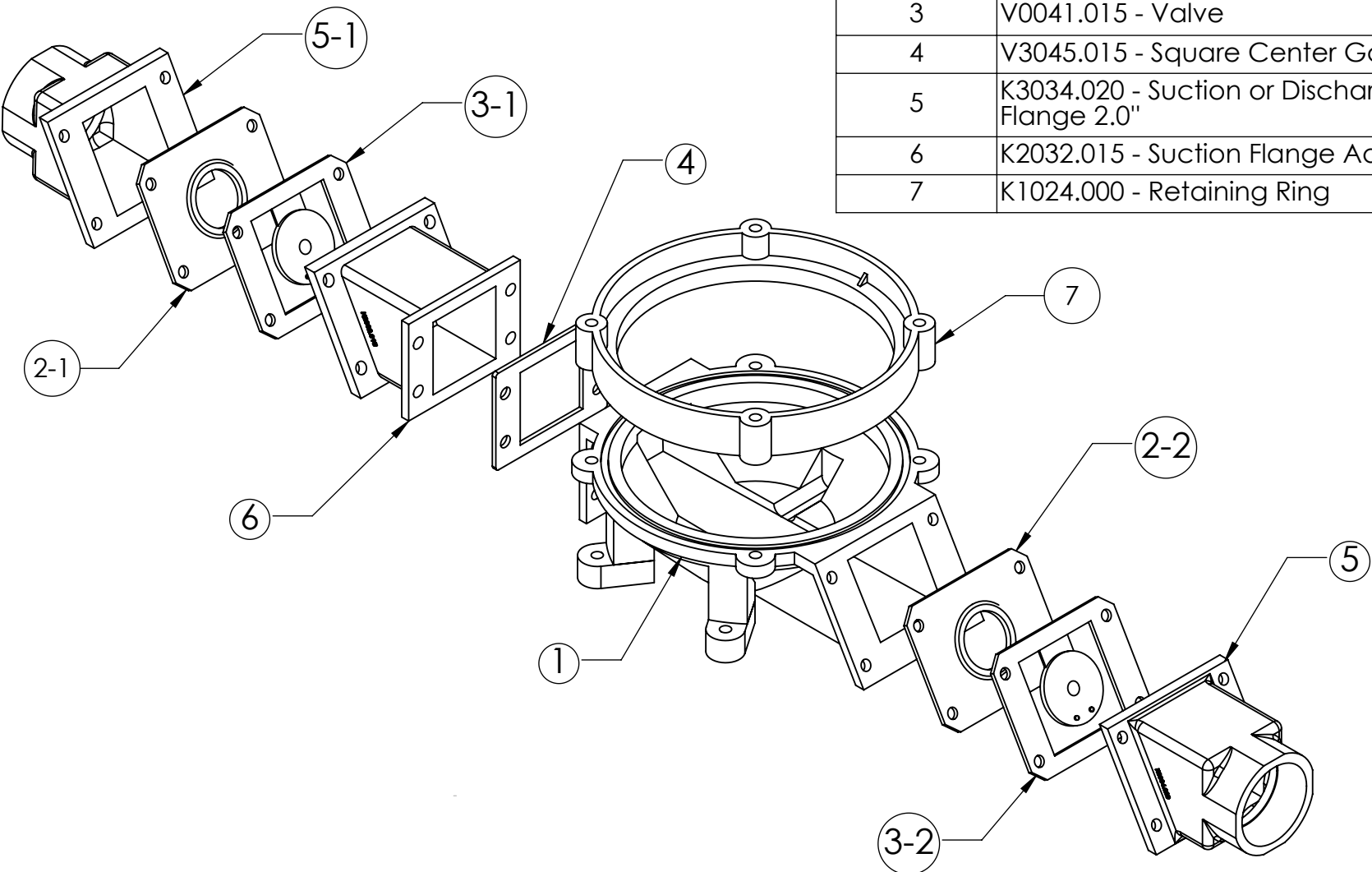
ABOWL #4 ASSEMBLY

DIMENSION: INCHES / (XX) MM

SCALE: 1:2

SHEET 8 OF 13

ITEM NO.	PART NUMBER - DESCRIPTION	QTY.
1	K1021.000 - Pump Bowl	1
2-1	V2043.015 - Valve Seating Plate	2
3	V0041.015 - Valve	2
4	V3045.015 - Square Center Gasket	1
5	K3034.020 - Suction or Discharge Flange 2.0"	2
6	K2032.015 - Suction Flange Adapter	1
7	K1024.000 - Retaining Ring	1



NOTES:
 STAINLESS STEEL FASTENERS NOT DEPICTED

(3) P/N B-FLANGE HARDWARE
 Stainless Steel Fasteners/Hardware Kit,
 Includes 4 Bolts, 8 Washers, 4 Nylon Lock Nut

(1) B-RING 2 BOWL
 Retaining Ring to Bowl Fasteners/Hardware Kit,
 Includes 4 Bolts, 8 Washers, 4 Nylon Lock Nut

PROPRIETARY AND CONFIDENTIAL

THE INFORMATION CONTAINED IN THIS DRAWING IS THE SOLE PROPERTY OF KEKO PUMP AND EQUIPMENT. ANY REPRODUCTION IN PART OR AS A WHOLE WITHOUT THE WRITTEN PERMISSION OF KEKO PUMP AND EQUIPMENT IS PROHIBITED.

UNLESS OTHERWISE SPECIFIED:
 DIMENSIONS ARE IN INCHES
 TOLERANCES:
 FRACTIONAL $\pm 1/32$
 ONE PLACE DECIMAL $\pm .1$
 TWO PLACE DECIMAL $\pm .03$
 THREE PLACE DECIMAL $\pm .020$
 ANGULAR $\pm .5^\circ$

MATERIAL

DRAWN	AWS	
REVISION #	PREVIOUS	CURRENT
	1.0	1.0
DATE: 6/23/2015		
COMMENTS:		

KEKO KEKO PUMP AND EQUIPMENT
 WWW.PUMPAHEAD.COM

PART NUMBER - TITLE

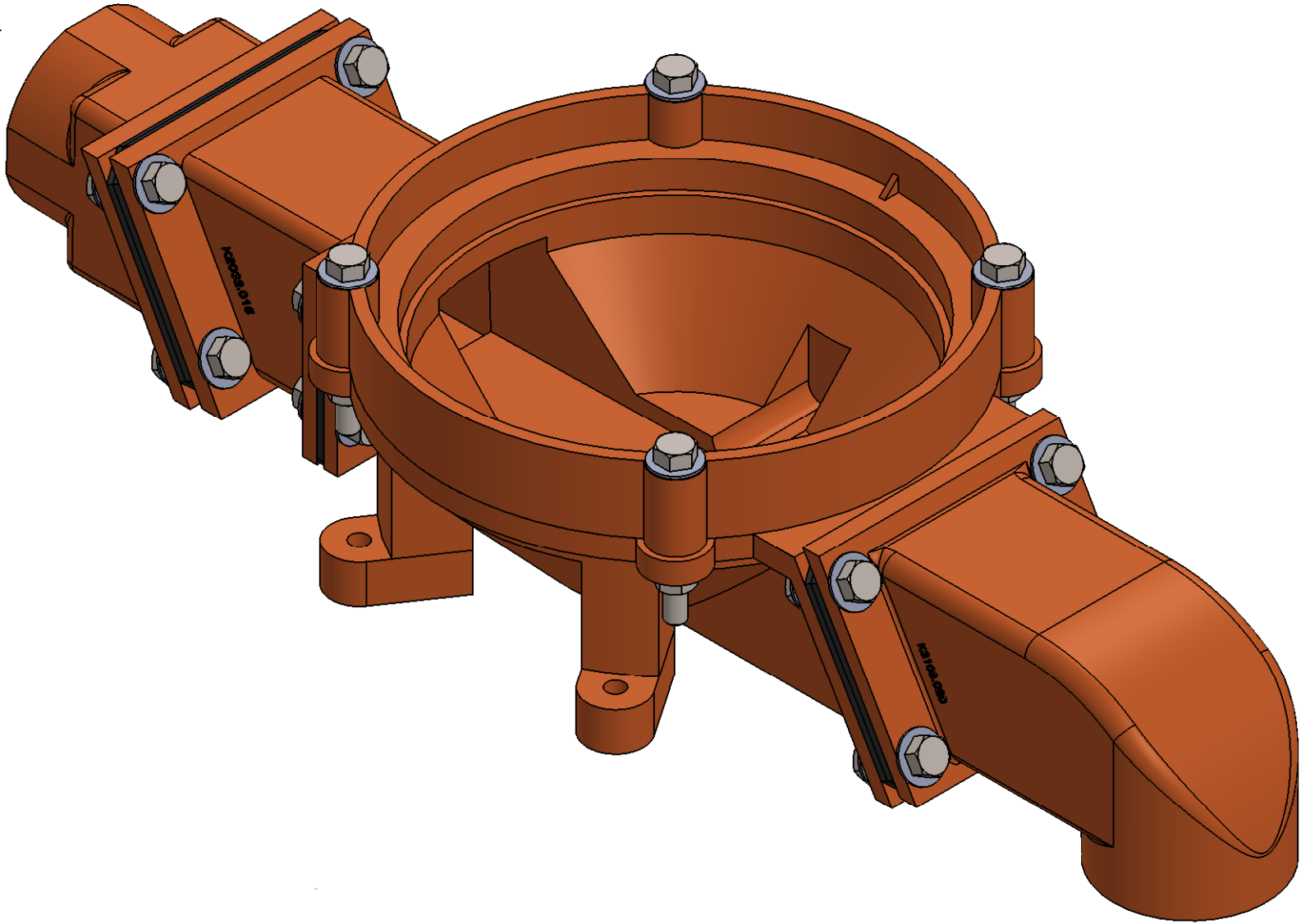
ABOWL #4 EXPLODED VIEW

DIMENSION: INCHES / (XX) MM

SCALE: 1:4

SHEET 9 OF 13

INLET



OUTLET

NOTES:
STRAIGHT X 90° (2.0" X 2.0")

PROPRIETARY AND CONFIDENTIAL
THE INFORMATION CONTAINED IN THIS DRAWING IS THE SOLE PROPERTY OF KEKO PUMP AND EQUIPMENT. ANY REPRODUCTION IN PART OR AS A WHOLE WITHOUT THE WRITTEN PERMISSION OF KEKO PUMP AND EQUIPMENT IS PROHIBITED.

UNLESS OTHERWISE SPECIFIED:
DIMENSIONS ARE IN INCHES
TOLERANCES:
FRACTIONAL ± 1/32
ONE PLACE DECIMAL ± .1
TWO PLACE DECIMAL ± .03
THREE PLACE DECIMAL ± .020
ANGULAR ± .5°

MATERIAL

DRAWN	AWS	
REVISION #	PREVIOUS	CURRENT
	1.0	1.0

DATE: 6/23/2015

COMMENTS:

KEKO PUMP AND EQUIPMENT
WWW.PUMPAHEAD.COM

PART NUMBER - TITLE

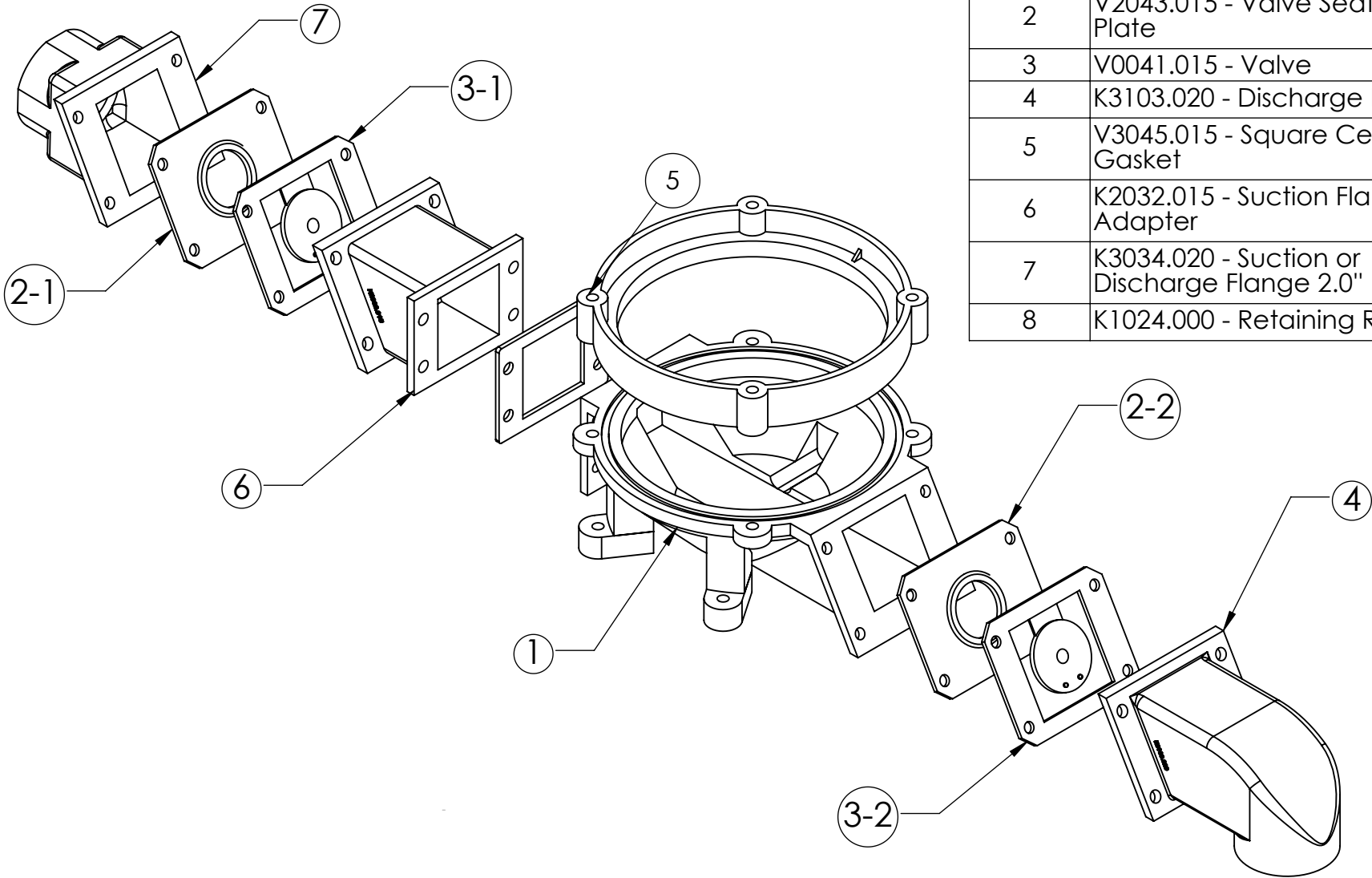
ABOWL #5 (HARDWARE)

DIMENSION: INCHES / (XX) MM

SCALE: 1:2

SHEET 10 OF 13

ITEM NO.	PART NUMBER - DESCRIPTION	QTY.
1	K1021.000 - Pump Bowl	1
2	V2043.015 - Valve Seating Plate	2
3	V0041.015 - Valve	2
4	K3103.020 - Discharge Elbow	1
5	V3045.015 - Square Center Gasket	1
6	K2032.015 - Suction Flange Adapter	1
7	K3034.020 - Suction or Discharge Flange 2.0"	1
8	K1024.000 - Retaining Ring	1



NOTES:
 STAINLESS STEEL FASTENERS NOT DEPICTED

(3) P/N B-FLANGE HARDWARE
 Stainless Steel Fasteners/Hardware Kit,
 Includes 4 Bolts, 8 Washers, 4 Nylon Lock Nut

(1) B-RING 2 BOWL
 Retaining Ring to Bowl Fasteners/Hardware Kit,
 Includes 4 Bolts, 8 Washers, 4 Nylon Lock Nut

PROPRIETARY AND CONFIDENTIAL

THE INFORMATION CONTAINED IN THIS DRAWING IS THE SOLE PROPERTY OF KEKO PUMP AND EQUIPMENT. ANY REPRODUCTION IN PART OR AS A WHOLE WITHOUT THE WRITTEN PERMISSION OF KEKO PUMP AND EQUIPMENT IS PROHIBITED.

UNLESS OTHERWISE SPECIFIED:
 DIMENSIONS ARE IN INCHES
 TOLERANCES:
 FRACTIONAL ± 1/32
 ONE PLACE DECIMAL ±.1
 TWO PLACE DECIMAL ±.03
 THREE PLACE DECIMAL ±.020
 ANGULAR ±.5°

MATERIAL

DRAWN	AWS	
	PREVIOUS	CURRENT
REVISION #	1.0	1.0
DATE:	6/23/2015	
COMMENTS:		

KEKO KEKO PUMP AND EQUIPMENT
 WWW.PUMPAHEAD.COM

PART NUMBER - TITLE

ABOWL #5 EXPLODED VIEW

DIMENSION: INCHES / (XX) MM

SCALE: 1:4

Suction Valve Replacement

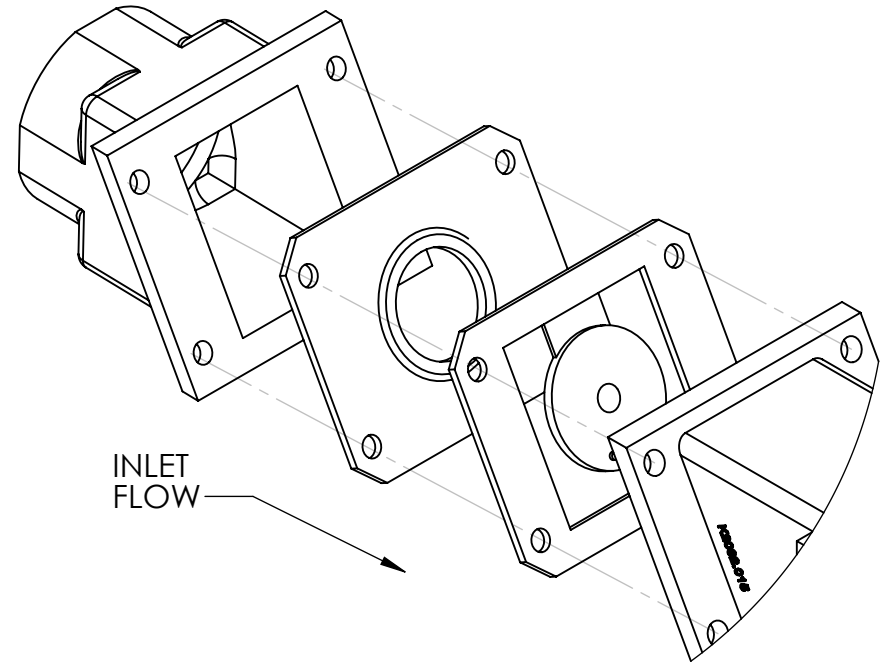
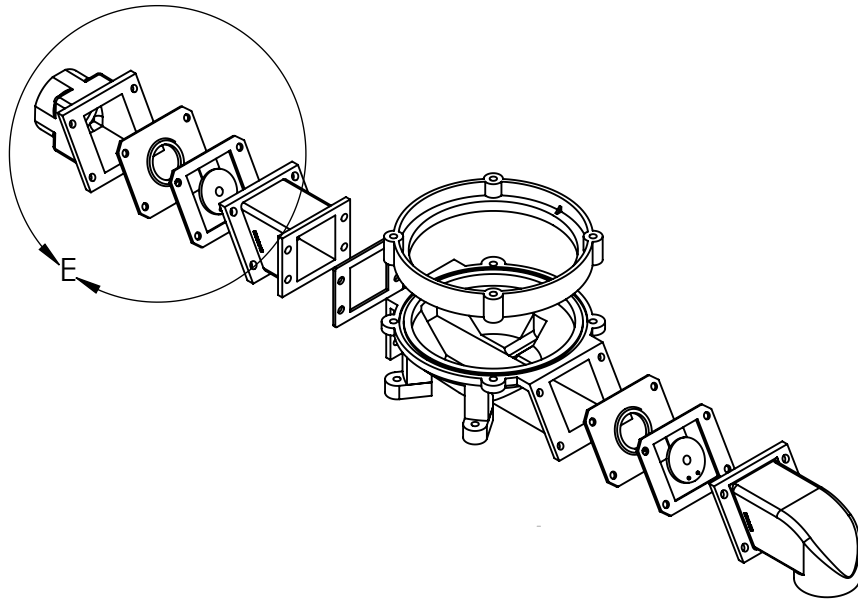
(Single / double diaphragm models)

Important Note: *Do not over tighten valves or gasket!!*

Torque Specification is 55"/lbs or 4.5'/lbs without a torque wrench, this is approximately hand tight plus 3/4 turn for valves and gaskets.

Important Note:

Ensure aluminum pump flanges are smooth and clean before installing new valves. If pitted or corroded, use a steel brush or grinding wheel to smooth and clean flange faces. If severely pitted, castings should be replaced.



DETAIL E
SCALE 1 : 2.5

NOTES:
STAINLESS STEEL FASTENERS NOT DEPICTED

(3) P/N B-FLANGE HARDWARE
Stainless Steel Fasteners/Hardware Kit,
Includes 4 Bolts, 8 Washers, 4 Nylon Lock Nut

(1) B-RING 2 BOWL
Retaining Ring to Bowl Fasteners/Hardware Kit,
Includes 4 Bolts, 8 Washers, 4 Nylon Lock Nut

PROPRIETARY AND CONFIDENTIAL

THE INFORMATION CONTAINED IN THIS DRAWING IS THE SOLE PROPERTY OF KEKO PUMP AND EQUIPMENT. ANY REPRODUCTION IN PART OR AS A WHOLE WITHOUT THE WRITTEN PERMISSION OF KEKO PUMP AND EQUIPMENT IS PROHIBITED.

UNLESS OTHERWISE SPECIFIED:

DIMENSIONS ARE IN INCHES
TOLERANCES:
FRACTIONAL ± 1/32
ONE PLACE DECIMAL ± .1
TWO PLACE DECIMAL ± .03
THREE PLACE DECIMAL ± .020
ANGULAR ± .5°

MATERIAL

DRAWN	AWS	
	PREVIOUS	CURRENT
REVISION #	1.0	1.0

DATE: 6/23/2015

COMMENTS:

KEKO KEKO PUMP AND EQUIPMENT
WWW.PUMPAHEAD.COM

PART NUMBER - TITLE

SUCTION VALVE REPLACEMENT

DIMENSION: INCHES / (XX) MM

SCALE: 3.5 SHEET 12 OF 13

Discharge Valve Replacement

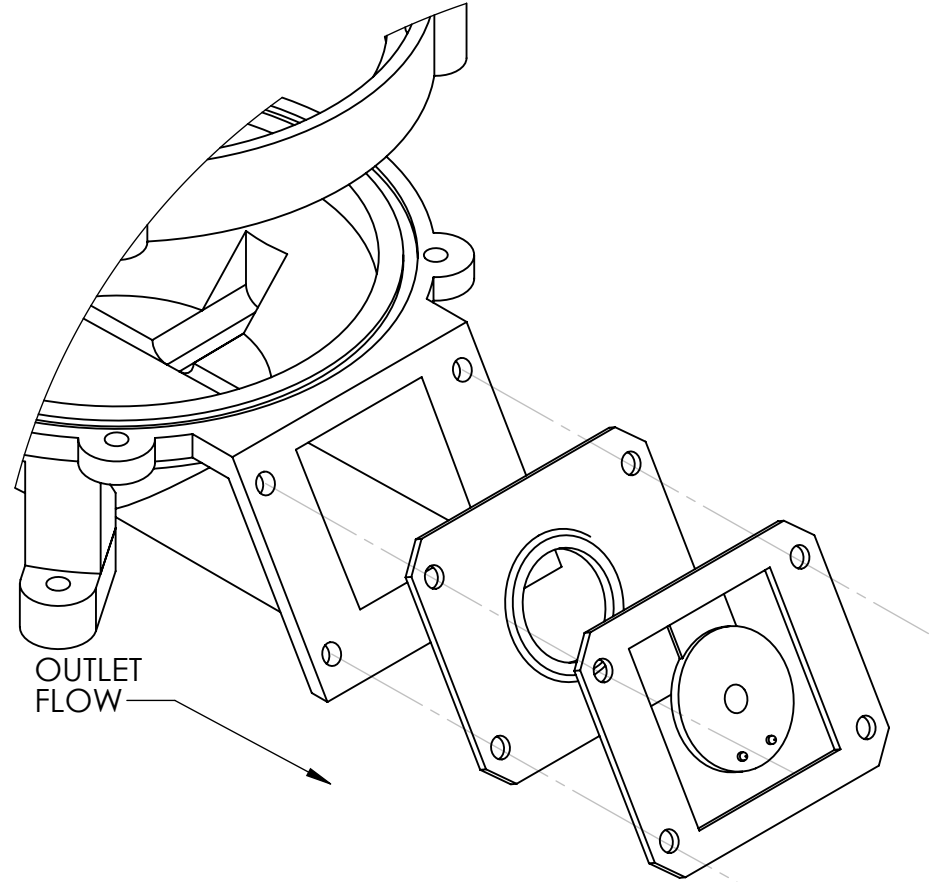
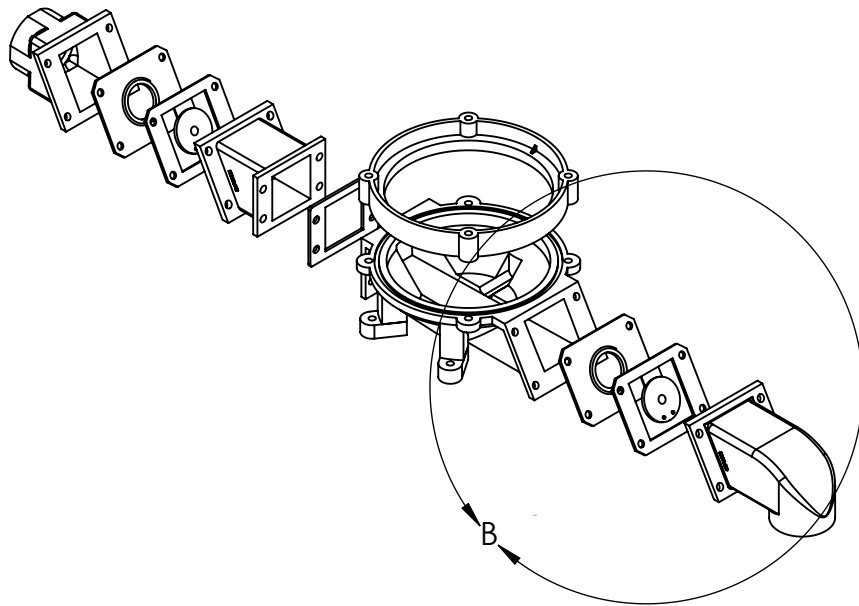
(Single / double diaphragm models)

Important Note: *Do not over tighten valves or gasket!!*

Torque Specification is 55"/lbs or 4.5'/lbs without a torque wrench, this is approximately hand tight plus 3/4 turn for valves and gaskets.

Important Note:

Ensure aluminum pump flanges are smooth and clean before installing new valves. If pitted or corroded, use a steel brush or grinding wheel to smooth and clean flange faces. If severely pitted, castings should be replaced.



DETAIL B
SCALE 1 : 2.5

NOTES:
STAINLESS STEEL FASTENERS NOT DEPICTED

(3) P/N B-FLANGE HARDWARE
Stainless Steel Fasteners/Hardware Kit,
Includes 4 Bolts, 8 Washers, 4 Nylon Lock Nut

(1) B-RING 2 BOWL
Retaining Ring to Bowl Fasteners/Hardware Kit,
Includes 4 Bolts, 8 Washers, 4 Nylon Lock Nut


PROPRIETARY AND CONFIDENTIAL

THE INFORMATION CONTAINED IN THIS DRAWING IS THE SOLE PROPERTY OF KEKO PUMP AND EQUIPMENT. ANY REPRODUCTION IN PART OR AS A WHOLE WITHOUT THE WRITTEN PERMISSION OF KEKO PUMP AND EQUIPMENT IS PROHIBITED.

UNLESS OTHERWISE SPECIFIED:
DIMENSIONS ARE IN INCHES
TOLERANCES:
FRACTIONAL $\pm 1/32$
ONE PLACE DECIMAL $\pm .1$
TWO PLACE DECIMAL $\pm .03$
THREE PLACE DECIMAL $\pm .020$
ANGULAR $\pm .5^\circ$

MATERIAL

DRAWN	AWS	
REVISION #	PREVIOUS	CURRENT
	1.0	1.0
DATE: 6/23/2015		
COMMENTS:		



KECO PUMP AND EQUIPMENT
WWW.PUMPAHEAD.COM

PART NUMBER - TITLE

DISCHARGE VALVE REPLACEMENT

DIMENSION: INCHES / (XX) MM

SCALE: 1:2.5